



Datasheet for ABIN951607

## anti-Factor XI antibody (Middle Region)



[Go to Product page](#)

### 2 Images

#### Overview

Quantity:	0.4 mL
Target:	Factor XI (F11)
Binding Specificity:	AA 288-315, Middle Region
Reactivity:	Human
Host:	Rabbit
Clonality:	Polyclonal
Conjugate:	This Factor XI antibody is un-conjugated
Application:	Western Blotting (WB), Enzyme Immunoassay (EIA)

#### Product Details

Immunogen:	KLH conjugated synthetic peptide between 288-315 amino acids from the Central region of human F11.
Isotype:	Ig Fraction
Specificity:	This antibody recognizes Human Coagulation factor XI (F11) (Center).
Purification:	Affinity Chromatography on Protein A

#### Target Details

Target:	Factor XI (F11)
Abstract:	<a href="#">F11 Products</a>
Background:	This gene encodes coagulation factor XI of the blood coagulation cascade. This protein is

## Target Details

---

present in plasma as a zymogen, which is a unique plasma coagulation enzyme because it exists as a homodimer consisting of two identical polypeptide chains linked by disulfide bonds. During activation of the plasma factor XI, an internal peptide bond is cleaved by factor XIIa (or XII) in each of the two chains, resulting in activated factor XIa, a serine protease composed of two heavy and two light chains held together by disulfide bonds. This activated plasma factor XI triggers the middle phase of the intrinsic pathway of blood coagulation by activating factor IX. Defects in this factor lead to Rosenthal syndrome, a blood coagulation abnormality. [provided by RefSeq].Synonyms: FX1, PTA, Plasma thromboplastin antecedent

Molecular Weight:	70109 Da
-------------------	----------

Gene ID:	2160
----------	------

NCBI Accession:	<a href="#">NP_000119</a>
-----------------	---------------------------

## Application Details

---

Application Notes:	Optimal working dilution should be determined by the investigator.
--------------------	--

Restrictions:	For Research Use only
---------------	-----------------------

## Handling

---

Format:	Liquid
---------	--------

Concentration:	0.25 mg/mL
----------------	------------

Buffer:	PBS containing 0.09 % (W/V) Sodium Azide as preservative
---------	--

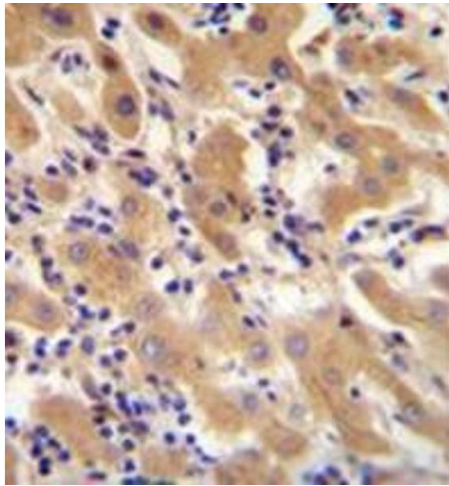
Preservative:	Sodium azide
---------------	--------------

Precaution of Use:	This product contains sodium azide: a POISONOUS AND HAZARDOUS SUBSTANCE which should be handled by trained staff only.
--------------------	--

Handling Advice:	Avoid repeated freezing and thawing.
------------------	--------------------------------------

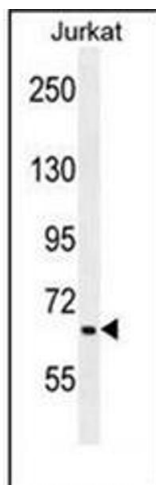
Storage:	4 °C/-20 °C
----------	-------------

Storage Comment:	Store undiluted at 2-8 °C for one month or (in aliquots) at -20 °C for longer.
------------------	--



### Immunohistochemistry (Paraffin-embedded Sections)

**Image 1.** Formalin fixed and paraffin embedded human liver tissue stained with F11 Antibody (Center) followed by peroxidase conjugation of the secondary antibody and DAB staining.



### Western Blotting

**Image 2.** Western blot analysis of F11 Antibody (Center) in Jurkat cell line lysates (35ug/lane). This demonstrates the F11 antibody detected the F11 protein (arrow).