

Datasheet for ABIN951610  
**anti-COPE antibody (C-Term)**

## 3 Images

[Go to Product page](#)

## Overview

Quantity:	0.4 mL
Target:	COPE
Binding Specificity:	AA 280-308, C-Term
Reactivity:	Human
Host:	Rabbit
Clonality:	Polyclonal
Conjugate:	This COPE antibody is un-conjugated
Application:	Western Blotting (WB), Immunofluorescence (IF), Immunohistochemistry (Paraffin-embedded Sections) (IHC (p)), Enzyme Immunoassay (EIA)

## Product Details

Immunogen:	KLH conjugated synthetic peptide between 280-308 amino acids from the C-terminal region of human COPE
Isotype:	Ig Fraction
Specificity:	This antibody reacts to COPE.
Cross-Reactivity (Details):	Species reactivity (tested):Human.
Purification:	Affinity chromatography on Protein A

## Target Details

Target:	COPE
---------	------

## Target Details

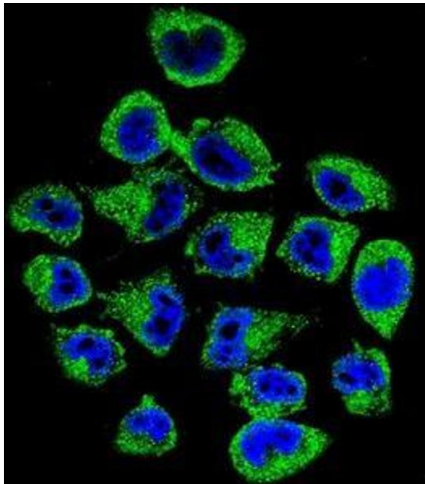
Alternative Name:	Coatomer Subunit epsilon ( <a href="#">COPE Products</a> )
Background:	The product of this gene is an epsilon subunit of coatomer protein complex. Coatomer is a cytosolic protein complex that binds to dilysine motifs and reversibly associates with Golgi non-clathrin-coated vesicles. It is required for budding from Golgi membranes, and is essential for the retrograde Golgi-to-ER transport of dilysine-tagged proteins. Coatomer complex consists of at least the alpha, beta, beta', gamma, delta, epsilon and zeta subunits. Alternatively spliced transcript variants encoding different isoforms have been identified. Synonyms: COPE, Epsilon-COP, Epsilon-coat protein
Molecular Weight:	34482 Da
Gene ID:	11316
NCBI Accession:	<a href="#">NP_009194</a>

## Application Details

Application Notes:	Optimal working dilution should be determined by the investigator.
Restrictions:	For Research Use only

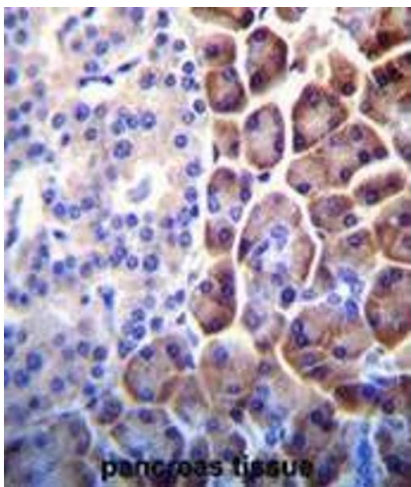
## Handling

Format:	Liquid
Concentration:	0.25 mg/mL
Buffer:	PBS, 0.09 % (W/V) sodium azide
Preservative:	Sodium azide
Precaution of Use:	This product contains sodium azide: a POISONOUS AND HAZARDOUS SUBSTANCE which should be handled by trained staff only.
Handling Advice:	Avoid repeated freezing and thawing.
Storage:	4 °C/-20 °C
Storage Comment:	Store undiluted at 2-8 °C for one month or (in aliquots) at -20 °C for longer.



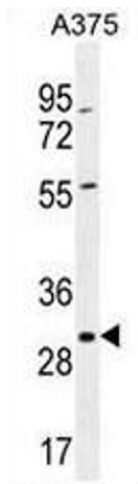
### Immunofluorescence

**Image 1.** Confocal immunofluorescent analysis of COPE Antibody (C-term)(Cat#AP51023PU-N) with A375 cell followed by Alexa Fluor 488-conjugated goat anti-rabbit IgG (green). DAPI was used to stain the cell nuclear (blue).



### Immunohistochemistry (Paraffin-embedded Sections)

**Image 2.** COPE Antibody (C-term) immunohistochemistry analysis in formalin fixed and paraffin embedded human pancreas tissue followed by peroxidase conjugation of the secondary antibody and DAB staining. This data demonstrates the use of COPE Antibody (C-term) for immunohistochemistry. Clinical relevance has not been evaluated.



### Western Blotting

**Image 3.** COPE Antibody (C-term) western blot analysis in A375 cell line lysates (35µg/lane). This demonstrates the COPE antibody detected the COPE protein (arrow).