



[Go to Product page](#)

Datasheet for ABIN951623

anti-COL4a2 antibody (Chain alpha 2, N-Term)

2 Images

Overview

Quantity:	0.4 mL
Target:	COL4a2 (COL4A2)
Binding Specificity:	AA 163-194, Chain alpha 2, N-Term
Reactivity:	Human
Host:	Rabbit
Clonality:	Polyclonal
Conjugate:	This COL4a2 antibody is un-conjugated
Application:	Western Blotting (WB), Flow Cytometry (FACS), Enzyme Immunoassay (EIA)

Product Details

Immunogen:	KLH conjugated synthetic peptide between 163-194 amino acids from the N-terminal region of human COL4A2
Isotype:	Ig Fraction
Specificity:	This antibody reacts to COL4A2.
Cross-Reactivity (Details):	Species reactivity (tested):Human.
Purification:	Affinity chromatography on Protein A

Target Details

Target:	COL4a2 (COL4A2)
Alternative Name:	Collagen Type IV alpha 2 Chain (COL4A2 Products)

Target Details

Background: This gene encodes one of the six subunits of type IV collagen, the major structural component of basement membranes. The C-terminal portion of the protein, known as canstatin, is an inhibitor of angiogenesis and tumor growth. Like the other members of the type IV collagen gene family, this gene is organized in a head-to-head conformation with another type IV collagen gene so that each gene pair shares a common promoter. Synonyms: COL4A2

Molecular Weight: 167553 Da

Gene ID: 1284

NCBI Accession: [NP_001837](#)

Application Details

Application Notes: Optimal working dilution should be determined by the investigator.

Restrictions: For Research Use only

Handling

Format: Liquid

Concentration: 0.25 mg/mL

Buffer: PBS, 0.09 % (W/V) sodium azide

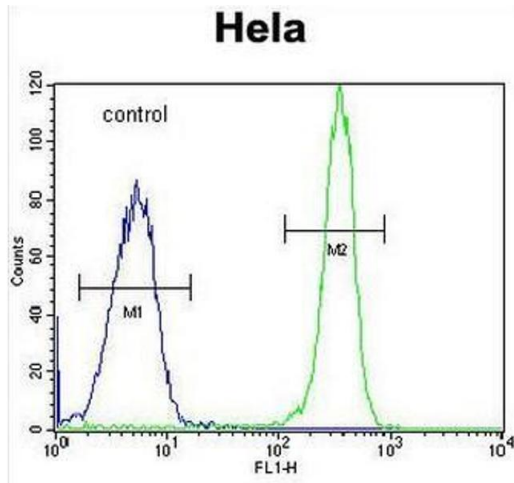
Preservative: Sodium azide

Precaution of Use: This product contains sodium azide: a POISONOUS AND HAZARDOUS SUBSTANCE which should be handled by trained staff only.

Handling Advice: Avoid repeated freezing and thawing.

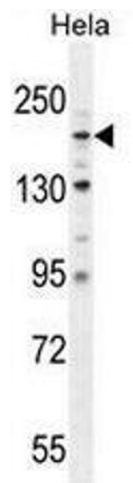
Storage: 4 °C/-20 °C

Storage Comment: Store undiluted at 2-8 °C for one month or (in aliquots) at -20 °C for longer.



Flow Cytometry

Image 1. COL4A2 Antibody (N-term) flow cytometric analysis of HeLa cells (right histogram) compared to a negative control cell (left histogram). FITC-conjugated goat-anti-rabbit secondary antibodies were used for the analysis.



Western Blotting

Image 2. COL4A2 Antibody (N-term) western blot analysis in HeLa cell line lysates (35µg/lane). This demonstrates the COL4A2 antibody detected the COL4A2 protein (arrow).