

Datasheet for ABIN951626

anti-COL8a2 antibody (C-Term, Chain alpha 2)**3** Images[Go to Product page](#)

Overview

Quantity:	0.4 mL
Target:	COL8a2 (COL8A2)
Binding Specificity:	AA 578-607, C-Term, Chain alpha 2
Reactivity:	Human
Host:	Rabbit
Clonality:	Polyclonal
Conjugate:	This COL8a2 antibody is un-conjugated
Application:	Western Blotting (WB), Immunofluorescence (IF), Immunohistochemistry (Paraffin-embedded Sections) (IHC (p)), Enzyme Immunoassay (EIA)

Product Details

Immunogen:	KLH conjugated synthetic peptide between 578-607 amino acids from the C-terminal region of human COL8A2
Isotype:	Ig Fraction
Specificity:	This antibody recognizes Human COL8A2. Other species not tested.
Purification:	Affinity chromatography on Protein A

Target Details

Target:	COL8a2 (COL8A2)
Abstract:	COL8A2 Products

Target Details

Background:	This gene encodes the alpha 2 chain of type VIII collagen. The protein is a major component of the basement membrane of the corneal endothelium and forms homo- or heterotrimers with alpha 1 (VIII) type collagens. Defects in this gene are associated with Fuchs endothelial corneal dystrophy and posterior polymorphous corneal dystrophy type 2.Synonyms: COL8A2, Endothelial collagen
-------------	--

Molecular Weight:	67244 Da
-------------------	----------

Gene ID:	1296
----------	------

NCBI Accession:	NP_005193
-----------------	---------------------------

Application Details

Application Notes:	Optimal working dilution should be determined by the investigator.
--------------------	--

Restrictions:	For Research Use only
---------------	-----------------------

Handling

Format:	Liquid
---------	--------

Concentration:	0.25 mg/mL
----------------	------------

Buffer:	PBS, 0.09 % (W/V) Sodium Azide
---------	--------------------------------

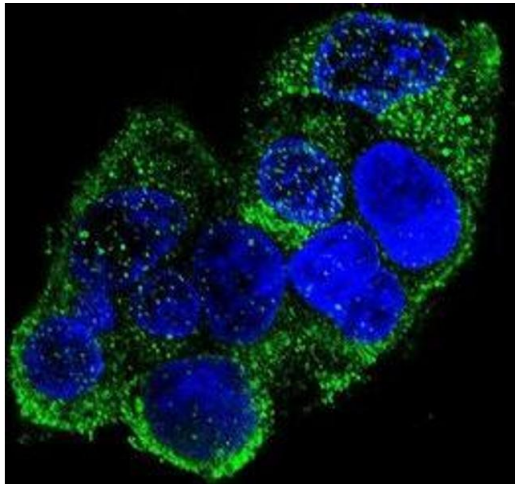
Preservative:	Sodium azide
---------------	--------------

Precaution of Use:	This product contains sodium azide: a POISONOUS AND HAZARDOUS SUBSTANCE which should be handled by trained staff only.
--------------------	--

Handling Advice:	Avoid repeated freezing and thawing.
------------------	--------------------------------------

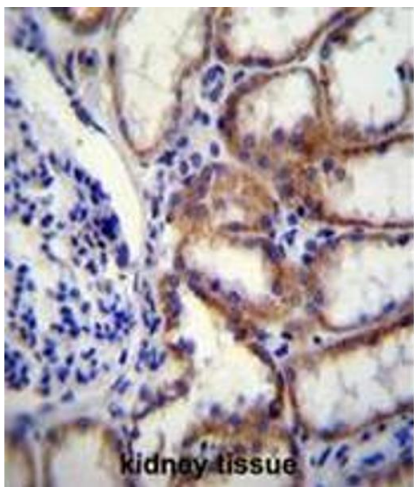
Storage:	4 °C/-20 °C
----------	-------------

Storage Comment:	Store undiluted at 2-8 °C for one month or (in aliquots) at -20 °C for longer.
------------------	--



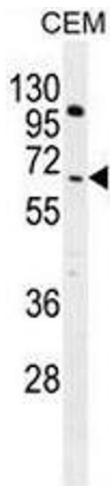
Immunofluorescence

Image 1. Confocal immunofluorescent analysis of COL8A2 Antibody (C-term)(Cat#AP51019PU-N) with HepG2 cell followed by Alexa Fluor 488-conjugated goat anti-rabbit IgG (green). DAPI was used to stain the cell nuclear (blue).



Immunohistochemistry (Paraffin-embedded Sections)

Image 2. COL8A2 Antibody (C-term) immunohistochemistry analysis in formalin fixed and paraffin embedded human kidney tissue followed by peroxidase conjugation of the secondary antibody and DAB staining. This data demonstrates the use of COL8A2 Antibody (C-term) for immunohistochemistry. Clinical relevance has not been evaluated.



Western Blotting

Image 3. COL8A2 Antibody (C-term) western blot analysis in CEM cell line lysates (35µg/lane). This demonstrates the COL8A2 antibody detected the COL8A2 protein (arrow).