

Datasheet for ABIN951629

anti-COL17A1 antibody (Chain alpha 1, Middle Region)**3** Images[Go to Product page](#)

Overview

Quantity:	0.4 mL
Target:	COL17A1
Binding Specificity:	Chain alpha 1, Middle Region
Reactivity:	Human
Host:	Rabbit
Clonality:	Polyclonal
Conjugate:	This COL17A1 antibody is un-conjugated
Application:	Western Blotting (WB), Immunohistochemistry (Paraffin-embedded Sections) (IHC (p))

Product Details

Immunogen:	KLH conjugated synthetic peptide selected between amino acids 490 and 520 of human COL17A1
Isotype:	Ig Fraction
Specificity:	This antibody reacts to COL17A1.
Cross-Reactivity (Details):	Species reactivity (tested):Human.
Purification:	Affinity chromatography on Protein A

Target Details

Target:	COL17A1
Abstract:	COL17A1 Products

Target Details

Background:	COL17A1 encodes the alpha chain of type XVII collagen. Unlike most collagens, collagen XVII is a transmembrane protein. Collagen XVII is a structural component of hemidesmosomes, multiprotein complexes at the dermal-epidermal basement membrane zone that mediate adhesion of keratinocytes to the underlying membrane.Synonyms: 180 kDa bullous pemphigoid antigen 2, BP180, BPAG2, Bullous pemphigoid antigen 2, COL17A1, LABD97, LAD-1
-------------	---

Molecular Weight:	150419 Da
-------------------	-----------

Gene ID:	1308
----------	------

NCBI Accession:	NP_000485
-----------------	---------------------------

Application Details

Application Notes:	Optimal working dilution should be determined by the investigator.
--------------------	--

Restrictions:	For Research Use only
---------------	-----------------------

Handling

Format:	Liquid
---------	--------

Concentration:	0.25 mg/mL
----------------	------------

Buffer:	PBS, 0.09 % (W/V) sodium azide
---------	--------------------------------

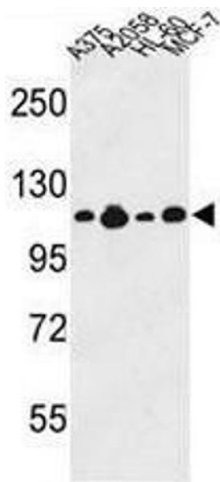
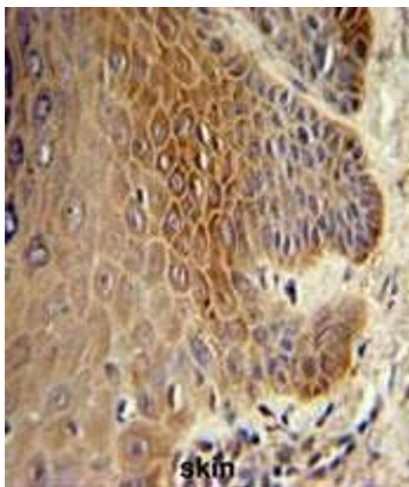
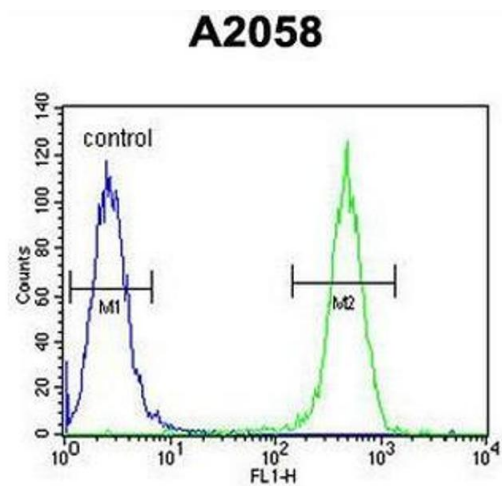
Preservative:	Sodium azide
---------------	--------------

Precaution of Use:	This product contains sodium azide: a POISONOUS AND HAZARDOUS SUBSTANCE which should be handled by trained staff only.
--------------------	--

Handling Advice:	Avoid repeated freezing and thawing.
------------------	--------------------------------------

Storage:	4 °C/-20 °C
----------	-------------

Storage Comment:	Store undiluted at 2-8 °C for one month or (in aliquots) at -20 °C for longer.
------------------	--



Flow Cytometry

Image 1. COL17A1 Antibody (Center) flow cytometric analysis of A2058 cells (right histogram) compared to a negative control cell (left histogram).FITC-conjugated goat-anti-rabbit secondary antibodies were used for the analysis.

Immunohistochemistry (Paraffin-embedded Sections)

Image 2. COL17A1 Antibody (Center) IHC analysis in formalin fixed and paraffin embedded skin tissue followed by peroxidase conjugation of the secondary antibody and DAB staining. This data demonstrates the use of the COL17A1 Antibody (Center) for immunohistochemistry. Clinical relevance has not been evaluated.

Western Blotting

Image 3. Western blot analysis of COL17A1 Antibody (Center) in A375, A2058, HL-60, MCF-7 cell line lysates (35µg/lane). COL17A1 (arrow) was detected using the purified Pab.