



[Go to Product page](#)

Datasheet for ABIN951630

anti-COL18A1 antibody (Chain alpha 1, Middle Region)

2 Images

Overview

Quantity:	0.4 mL
Target:	COL18A1
Binding Specificity:	AA 1314-1343, Chain alpha 1, Middle Region
Reactivity:	Human, Mouse
Host:	Rabbit
Clonality:	Polyclonal
Conjugate:	This COL18A1 antibody is un-conjugated
Application:	Western Blotting (WB), Immunohistochemistry (Paraffin-embedded Sections) (IHC (p)), Enzyme Immunoassay (EIA)

Product Details

Immunogen:	KLH conjugated synthetic peptide between 1314-1343 amino acids from the Central region of Human COL18A1 Gene name: COL18A1
Isotype:	Ig Fraction
Purification:	Protein A column, followed by peptide affinity purification

Target Details

Target:	COL18A1
Abstract:	COL18A1 Products
Background:	Synonyms: COL18A1, Endostatin, KNO1

Target Details

Gene ID: 80781

NCBI Accession: [NP_085059](#)

Application Details

Application Notes: Optimal working dilution should be determined by the investigator.

Restrictions: For Research Use only

Handling

Format: Liquid

Concentration: 0.25 mg/mL

Buffer: PBS 0.09 % (w/v) Sodium Azide

Preservative: Sodium azide

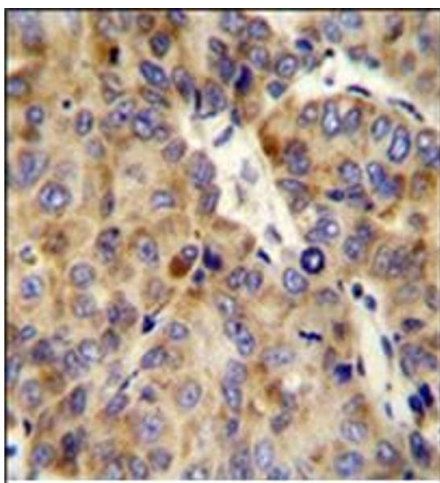
Precaution of Use: This product contains sodium azide: a POISONOUS AND HAZARDOUS SUBSTANCE which should be handled by trained staff only.

Handling Advice: Avoid repeated freezing and thawing.

Storage: 4 °C/-20 °C

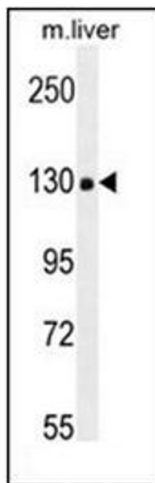
Storage Comment: Store the antibody undiluted at 2-8 °C for one month or (in aliquots) at -20 °C for longer.

Images



Immunohistochemistry (Paraffin-embedded Sections)

Image 1. Formalin fixed and paraffin embedded human hepatocarcinoma stained with COL18A1 Antibody (Center) Cat.-No AP51011PU-N followed by peroxidase conjugation of the secondary antibody and DAB staining. This data demonstrates the use of the COL18A1 Antibody (Center) for immunohistochemistry. Clinical relevance has not been evaluated.



Western Blotting

Image 2. Western blot analysis in mouse liver tissue lysates (35ug/lane) using COL18A1 Antibody (Center) Cat.-No AP51011PU-N. This demonstrates the COL18A1 antibody detected the COL18A1 protein (arrow).