



[Go to Product page](#)

Datasheet for ABIN951631

## anti-COL21A1 antibody (Chain alpha 1, N-Term)

### 3 Images

#### Overview

Quantity:	0.4 mL
Target:	COL21A1
Binding Specificity:	AA 211-240, Chain alpha 1, N-Term
Reactivity:	Human
Host:	Rabbit
Clonality:	Polyclonal
Conjugate:	This COL21A1 antibody is un-conjugated
Application:	Western Blotting (WB), Immunofluorescence (IF), Immunohistochemistry (Paraffin-embedded Sections) (IHC (p)), Enzyme Immunoassay (EIA)

#### Product Details

Immunogen:	KLH conjugated synthetic peptide between 211-240 amino acids from the N-terminal region of human COL21A1
Isotype:	Ig Fraction
Specificity:	This antibody reacts to COL21A1.
Cross-Reactivity (Details):	Species reactivity (tested):Human.
Purification:	Affinity chromatography on Protein A

#### Target Details

Target:	COL21A1
---------	---------

## Target Details

---

Alternative Name:	Collagen Type XXI alpha 1 Chain ( <a href="#">COL21A1 Products</a> )
Background:	This gene encodes the alpha chain of type XXI collagen, a member of the FACIT collagen family (fibril-associated collagens with interrupted helices). Type XXI collagen is localized to tissues containing type I collagen so, like other members of this collagen family, it may serve to maintain the integrity of the extracellular matrix. An alternatively spliced transcript variant has been described, but its full-length nature has yet to be determined. Synonyms: COL1AL, COL21A1, FP633
Molecular Weight:	99369 Da
Gene ID:	81578
NCBI Accession:	<a href="#">NP_110447</a>

## Application Details

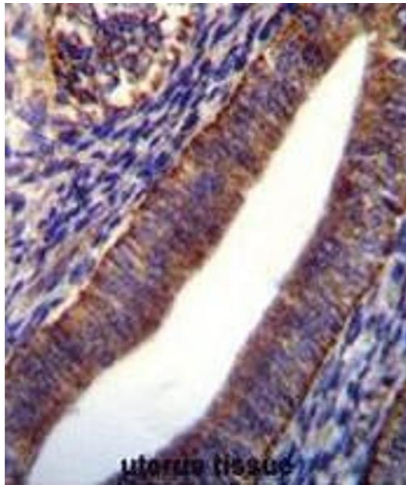
---

Application Notes:	Optimal working dilution should be determined by the investigator.
Restrictions:	For Research Use only

## Handling

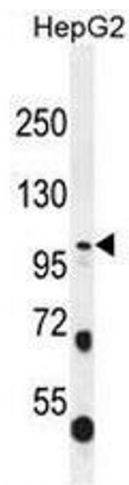
---

Format:	Liquid
Concentration:	0.25 mg/mL
Buffer:	PBS, 0.09 % (W/V) sodium azide
Preservative:	Sodium azide
Precaution of Use:	This product contains sodium azide: a POISONOUS AND HAZARDOUS SUBSTANCE which should be handled by trained staff only.
Handling Advice:	Avoid repeated freezing and thawing.
Storage:	4 °C/-20 °C
Storage Comment:	Store undiluted at 2-8 °C for one month or (in aliquots) at -20 °C for longer.



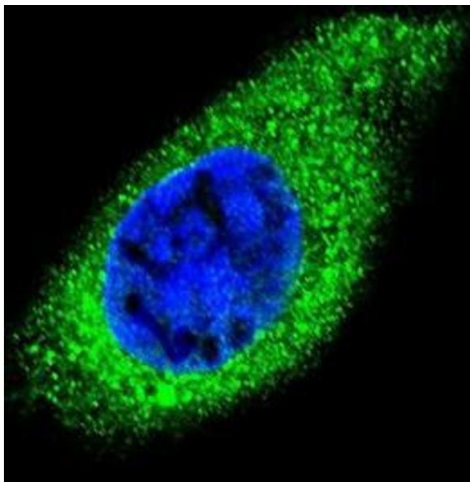
### Immunohistochemistry (Paraffin-embedded Sections)

**Image 1.** COL21A1 Antibody (N-term) immunohistochemistry analysis in formalin fixed and paraffin embedded human uterus tissue followed by peroxidase conjugation of the secondary antibody and DAB staining. This data demonstrates the use of COL21A1 Antibody (N-term) for immunohistochemistry. Clinical relevance has not been evaluated.



### Western Blotting

**Image 2.** COL21A1 Antibody (N-term) western blot analysis in HepG2 cell line lysates (35µg/lane). This demonstrates the COL21A1 antibody detected the COL21A1 protein (arrow).



### Immunofluorescence

**Image 3.** Confocal immunofluorescent analysis of COL21A1 Antibody (N-term)(Cat#AP51014PU-N) with HepG2 cell followed by Alexa Fluor 488-conjugated goat anti-rabbit IgG (green). DAPI was used to stain the cell nuclear (blue).