

Datasheet for ABIN951644

anti-Complement Factor B antibody (Middle Region)



[Go to Product page](#)

3 Images

Overview

Quantity:	0.4 mL
Target:	Complement Factor B (CFB)
Binding Specificity:	AA 474-504, Middle Region
Reactivity:	Human, Mouse
Host:	Rabbit
Clonality:	Polyclonal
Application:	Western Blotting (WB), Immunohistochemistry (Paraffin-embedded Sections) (IHC (p)), Enzyme Immunoassay (EIA)

Product Details

Immunogen:	KLH conjugated synthetic peptide between 474~504 amino acids from the Center region of human CFB
Isotype:	Ig Fraction
Specificity:	This antibody reacts to CFB.
Cross-Reactivity (Details):	Species reactivity (tested): Human and Mouse.
Purification:	Affinity chromatography on Protein A

Target Details

Target:	Complement Factor B (CFB)
Alternative Name:	Complement Factor B (CFB Products)

Target Details

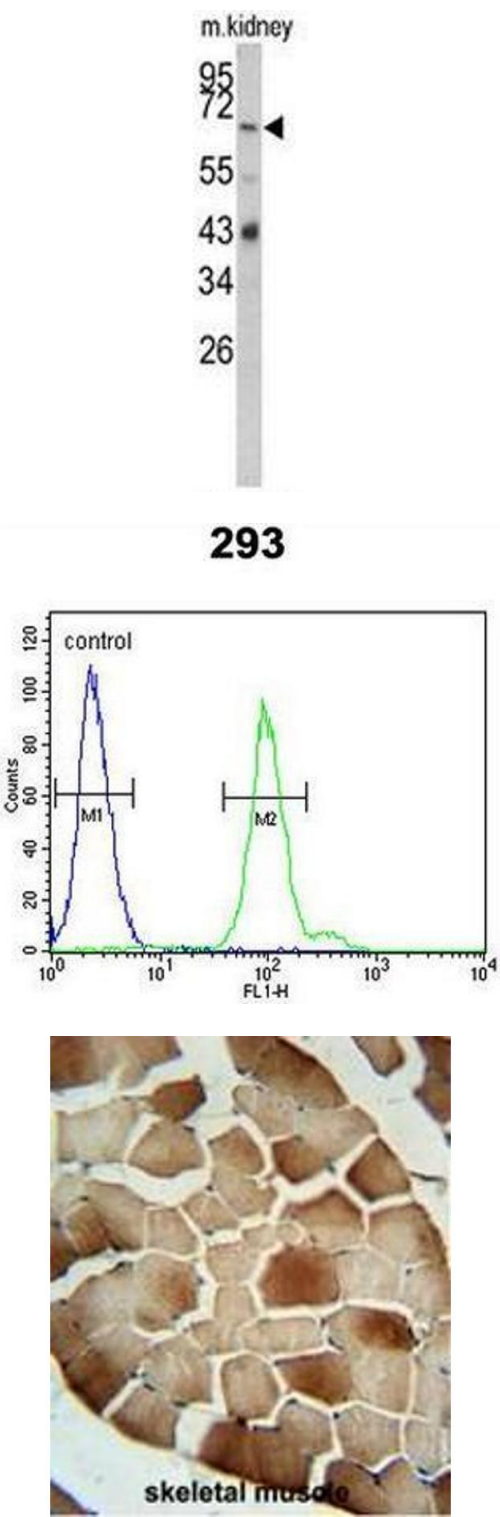
Background:	CFB encodes complement factor B, a component of the alternative pathway of complement activation. Factor B circulates in the blood as a single chain polypeptide. Upon activation of the alternative pathway, it is cleaved by complement factor D yielding the noncatalytic chain Ba and the catalytic subunit Bb. The active subunit Bb is a serine protease which associates with C3b to form the alternative pathway C3 convertase. Bb is involved in the proliferation of preactivated B lymphocytes, while Ba inhibits their proliferation.Synonyms: BF, BFD, C3/C5 convertase, CFB, Glycine-rich beta glycoprotein, PBF2, Properdin factor B
Molecular Weight:	85533 Da
Gene ID:	629
NCBI Accession:	NP_001701
Pathways:	Complement System , Proton Transport , Ribonucleoside Biosynthetic Process

Application Details

Application Notes:	Optimal working dilution should be determined by the investigator.
Restrictions:	For Research Use only

Handling

Format:	Liquid
Concentration:	0.25 mg/mL
Buffer:	PBS, 0.09 % (W/V) sodium azide
Preservative:	Sodium azide
Precaution of Use:	This product contains sodium azide: a POISONOUS AND HAZARDOUS SUBSTANCE which should be handled by trained staff only.
Handling Advice:	Avoid repeated freezing and thawing.
Storage:	4 °C/-20 °C
Storage Comment:	Store the antibody undiluted at 2-8 °C for one month or (in aliquots) at -20 °C for longer.



Western Blotting

Image 1. Western blot analysis of CFB Antibody (Center) in mouse kidney tissue lysates (35µg/lane). CFB (arrow) was detected using the purified Pab.

Flow Cytometry

Image 2. CFB Antibody (Center) flow cytometric analysis of 293 cells (right histogram) compared to a negative control cell (left histogram).FITC-conjugated goat-anti-rabbit secondary antibodies were used for the analysis.

Immunohistochemistry (Paraffin-embedded Sections)

Image 3. CFB Antibody (Center) immunohistochemistry analysis in formalin fixed and paraffin embedded human skeletal muscle followed by peroxidase conjugation of the secondary antibody and DAB staining. This data demonstrates the use of the CFB Antibody (Center) for immunohistochemistry. Clinical relevance has not been evaluated.