

Datasheet for ABIN951657
anti-Complexin 1 antibody (Middle Region)

2 Images

[Go to Product page](#)

Overview

Quantity:	0.4 mL
Target:	Complexin 1 (CPLX1)
Binding Specificity:	AA 39-69, Middle Region
Reactivity:	Human
Host:	Rabbit
Clonality:	Polyclonal
Conjugate:	This Complexin 1 antibody is un-conjugated
Application:	Western Blotting (WB), Immunohistochemistry (Paraffin-embedded Sections) (IHC (p)), Enzyme Immunoassay (EIA)

Product Details

Immunogen:	KLH conjugated synthetic peptide between 39~69 amino acids from the Central region of Human CPLX1 Genename: CPLX1
Isotype:	Ig Fraction
Specificity:	This antibody recognizes Human Complexin-1 (Center).
Purification:	Affinity chromatography on Protein A

Target Details

Target:	Complexin 1 (CPLX1)
Alternative Name:	Complexin-1 (CPLX1 Products)

Target Details

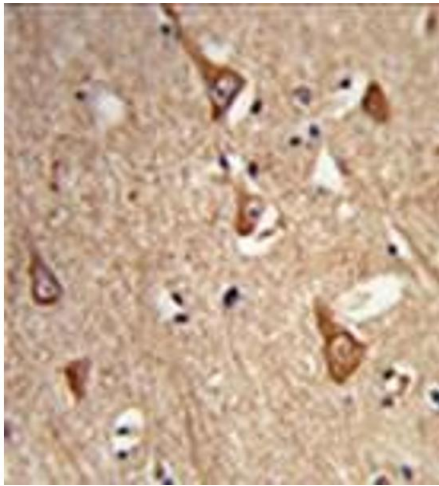
Background:	CPLX1 encoded by the complexin/synaphin gene family are cytosolic proteins that function in synaptic vesicle exocytosis. These proteins bind syntaxin, part of the SNAP receptor. The protein product of this gene binds to the SNAP receptor complex and disrupts it, allowing transmitter release.Synonyms: CPLX1, CPX I, Complexin I, Synaphin-2
Molecular Weight:	15030 Da
Gene ID:	10815
NCBI Accession:	NP_006642
Pathways:	Hormone Transport , Synaptic Vesicle Exocytosis , Dicarboxylic Acid Transport

Application Details

Application Notes:	Optimal working dilution should be determined by the investigator.
Restrictions:	For Research Use only

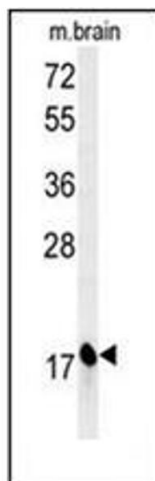
Handling

Format:	Liquid
Concentration:	0.25 mg/mL
Buffer:	PBS, 0.09 % Sodium Azide
Preservative:	Sodium azide
Precaution of Use:	This product contains sodium azide: a POISONOUS AND HAZARDOUS SUBSTANCE which should be handled by trained staff only.
Handling Advice:	Avoid repeated freezing and thawing.
Storage:	4 °C/-20 °C
Storage Comment:	Store undiluted at 2-8 °C for one month or (in aliquots) at -20 °C for longer.



Immunohistochemistry (Paraffin-embedded Sections)

Image 1. Formalin-fixed, paraffin-embedded human brain tissue reacted with Complexin-1 Antibody (Center) followed which was peroxidase-conjugated to the secondary antibody, followed by DAB staining. This data demonstrates the use of this antibody for immunohistochemistry; clinical relevance has not been evaluated.



Western Blotting

Image 2. Western blot analysis of Complexin-1 Antibody (Center) in Mouse brain tissue lysates (35ug/lane). CPLX1 (arrow) was detected using the purified Pab.