

Datasheet for ABIN951673
anti-COX7A2L antibody (Middle Region)[Go to Product page](#)

3 Images

Overview

Quantity:	0.4 mL
Target:	COX7A2L
Binding Specificity:	AA 36-65, Middle Region
Reactivity:	Human, Mouse
Host:	Rabbit
Clonality:	Polyclonal
Conjugate:	This COX7A2L antibody is un-conjugated
Application:	Western Blotting (WB), Immunohistochemistry (Paraffin-embedded Sections) (IHC (p)), Enzyme Immunoassay (EIA)

Product Details

Immunogen:	KLH conjugated synthetic peptide between 36-65 amino acids from the Central region of human COX7A2L
Isotype:	Ig Fraction
Specificity:	This antibody reacts to COX7A2L.
Cross-Reactivity (Details):	Species reactivity (tested): Human and Mouse.
Purification:	Affinity chromatography on Protein A

Target Details

Target:	COX7A2L
---------	---------

Target Details

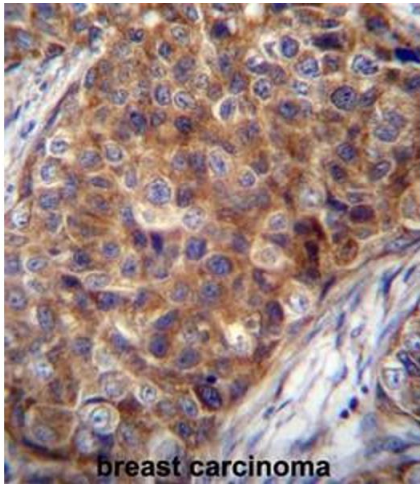
Alternative Name:	COX VIIa Related Protein (COX7A2L Products)
Background:	Cytochrome c oxidase (COX), the terminal component of the mitochondrial respiratory chain, catalyzes the electron transfer from reduced cytochrome c to oxygen. This component is a heteromeric complex consisting of 3 catalytic subunits encoded by mitochondrial genes and multiple structural subunits encoded by nuclear genes. The mitochondrially-encoded subunits function in electron transfer, and the nuclear-encoded subunits may function in the regulation and assembly of the complex. This nuclear gene encodes a protein similar to polypeptides 1 and 2 of subunit VIIa in the C-terminal region, and also highly similar to the mouse Sig81 protein sequence. This gene is expressed in all tissues, and upregulated in a breast cancer cell line after estrogen treatment. It is possible that this gene represents a regulatory subunit of COX and mediates the higher level of energy production in target cells by estrogen.Synonyms: COX7A2L, COX7AR, COX7RP, COX7a-related protein, Cytochrome c oxidase subunit 7A-related protein, Cytochrome c oxidase subunit VIIa-related protein, EB1
Molecular Weight:	12615 Da
Gene ID:	9167
NCBI Accession:	NP_004709

Application Details

Application Notes:	Optimal working dilution should be determined by the investigator.
Restrictions:	For Research Use only

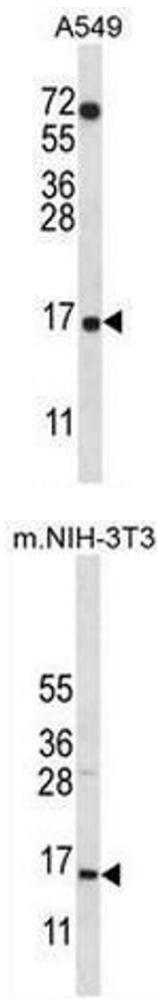
Handling

Format:	Liquid
Concentration:	0.25 mg/mL
Buffer:	PBS, 0.09 % (W/V) sodium azide
Preservative:	Sodium azide
Precaution of Use:	This product contains sodium azide: a POISONOUS AND HAZARDOUS SUBSTANCE which should be handled by trained staff only.
Handling Advice:	Avoid repeated freezing and thawing.
Storage:	4 °C/-20 °C
Storage Comment:	Store undiluted at 2-8 °C for one month or (in aliquots) at -20 °C for longer.



Immunohistochemistry (Paraffin-embedded Sections)

Image 1. COX7A2L Antibody (Center) immunohistochemistry analysis in formalin fixed and paraffin embedded human breast carcinoma followed by peroxidase conjugation of the secondary antibody and DAB staining. This data demonstrates the use of COX7A2L Antibody (Center) for immunohistochemistry. Clinical relevance has not been evaluated.



Western Blotting

Image 2. COX7A2L Antibody (Center) western blot analysis in A549 cell line lysates (35µg/lane). This demonstrates the COX7A2L antibody detected the COX7A2L protein (arrow).

Western Blotting

Image 3. COX7A2L Antibody (Center) western blot analysis in mouse NIH-3T3 cell line lysates (35µg/lane). This demonstrates the COX7A2L antibody detected the COX7A2L protein (arrow).