

Datasheet for ABIN951683  
**anti-CPSF3L antibody (N-Term)**

## 3 Images

[Go to Product page](#)

## Overview

Quantity:	0.4 mL
Target:	CPSF3L
Binding Specificity:	AA 98-126, N-Term
Reactivity:	Human
Host:	Rabbit
Clonality:	Polyclonal
Conjugate:	This CPSF3L antibody is un-conjugated
Application:	Western Blotting (WB), Immunofluorescence (IF), Immunohistochemistry (Paraffin-embedded Sections) (IHC (p)), Enzyme Immunoassay (EIA)

## Product Details

Immunogen:	KLH conjugated synthetic peptide between 98-126 amino acids from the N-terminal region of Human CPSF3L Genename: CPSF3L
Isotype:	Ig Fraction
Specificity:	This antibody recognizes Human CPSF3L (N-term).
Purification:	Affinity Chromatography on Protein A

## Target Details

Target:	CPSF3L
Alternative Name:	CPSF3L ( <a href="#">CPSF3L Products</a> )

## Target Details

**Background:** The Integrator complex contains at least 12 subunits and associates with the C-terminal domain of RNA polymerase II large subunit (POLR2A, MIM 180660) and mediates the 3-prime end processing of small nuclear RNAs U1 (RNU1, MIM 180680) and U2 (RNU2, MIM 180690). INTS11, or CPSF3L, is the catalytic subunit of the Integrator complex (Baillat et al., 2005 [PubMed 16239144]). Synonyms: CPSF3-like protein, Cleavage and polyadenylation-specific factor 3-like protein, INTS11, Int11, Integrator complex subunit 11, Protein related to CPSF subunits of 68 kDa, RC-68, RC68

**Molecular Weight:** 67663 Da

**Gene ID:** 54973

**NCBI Accession:** [NP\\_060341](#)

## Application Details

**Application Notes:** Optimal working dilution should be determined by the investigator.

**Restrictions:** For Research Use only

## Handling

**Format:** Liquid

**Concentration:** 0.25 mg/mL

**Buffer:** PBS, 0.09 % Sodium Azide

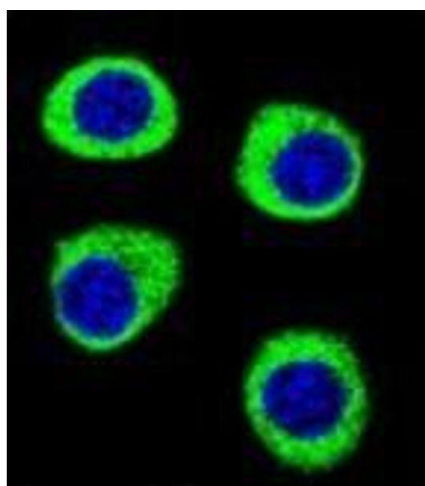
**Preservative:** Sodium azide

**Precaution of Use:** This product contains sodium azide: a POISONOUS AND HAZARDOUS SUBSTANCE which should be handled by trained staff only.

**Handling Advice:** Avoid repeated freezing and thawing.

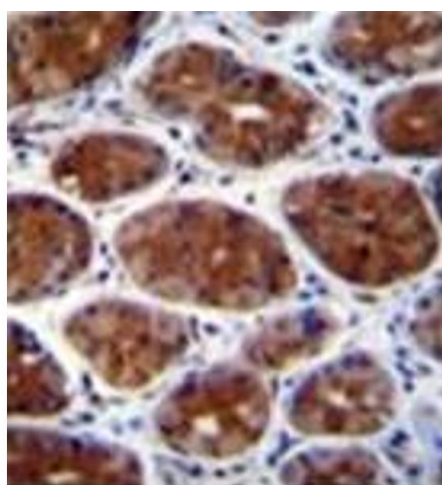
**Storage:** 4 °C/-20 °C

**Storage Comment:** Store undiluted at 2-8 °C for one month or (in aliquots) at -20 °C for longer.



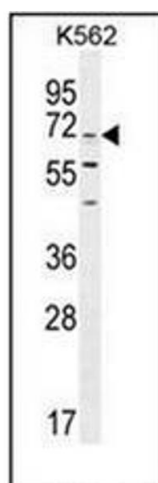
### Immunofluorescence

**Image 1.** Confocal immunofluorescent analysis of CPSF3L Antibody with U-251MG cell followed by Alexa Fluor 488-conjugated goat anti-rabbit IgG (green). DAPI was used to stain the cell nuclear (blue).



### Immunohistochemistry (Paraffin-embedded Sections)

**Image 2.** Formalin fixed, paraffin embedded human stomach tissue stained with CPSF3L Antibody followed by peroxidase conjugation of the secondary antibody and DAB staining. This data demonstrates the use of CPSF3L Antibody (N-term) for immunohistochemistry. Clinical relevance has not been evaluated.



### Western Blotting

**Image 3.** Western blot analysis of CPSF3L Antibody in K562 cell line lysates (35ug/lane). This demonstrates the CPSF3L antibody detected the CPSF3L protein (arrow).