

Datasheet for ABIN951685
anti-CPSF4L antibody (C-Term)



[Go to Product page](#)

2 Images

Overview

Quantity:	0.4 mL
Target:	CPSF4L
Binding Specificity:	C-Term
Reactivity:	Human
Host:	Rabbit
Clonality:	Polyclonal
Conjugate:	This CPSF4L antibody is un-conjugated
Application:	Western Blotting (WB), Enzyme Immunoassay (EIA)

Product Details

Isotype:	Ig Fraction
Specificity:	This antibody recognizes Human CPSF4L (C-term).
Purification:	Affinity Chromatography on protein A

Target Details

Target:	CPSF4L
Alternative Name:	CPSF4L (CPSF4L Products)
Background:	The specific function of the protein remains unknownSynonyms: Putative cleavage and polyadenylation specificity factor subunit 4-like protein
Molecular Weight:	20727 Da

Target Details

Gene ID:	642843
NCBI Accession:	NP_001123357

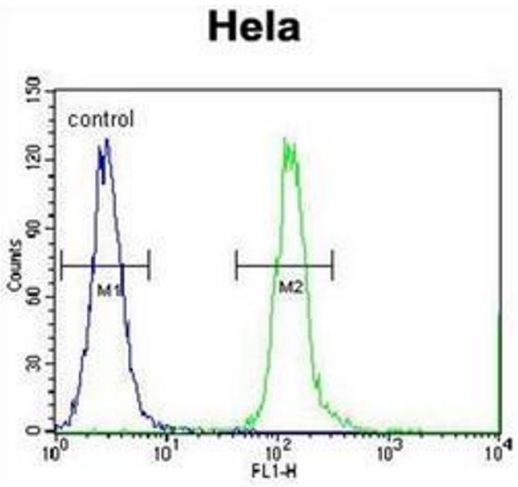
Application Details

Application Notes:	Optimal working dilution should be determined by the investigator.
Restrictions:	For Research Use only

Handling

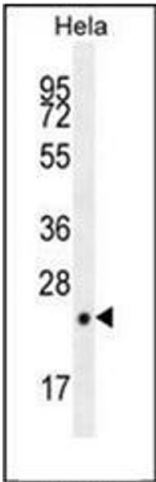
Format:	Liquid
Concentration:	0.25 mg/mL
Buffer:	PBS, 0.09 % Sodium Azide
Preservative:	Sodium azide
Precaution of Use:	This product contains sodium azide: a POISONOUS AND HAZARDOUS SUBSTANCE which should be handled by trained staff only.
Handling Advice:	Avoid repeated freezing and thawing.
Storage:	4 °C/-20 °C
Storage Comment:	Store undiluted at 2-8 °C for one month or (in aliquots) at -20 °C for longer.

Images



Flow Cytometry

Image 1. Flow cytometric analysis of Hela cells using CPSF4L Antibody (C-term) Cat.-No AP51060PU-N (right histogram) compared to a negative control cell (left histogram). FITC-conjugated Goat-anti-Rabbit secondary antibodies were used for the analysis.



Western Blotting

Image 2. Western blot analysis of CPSF4L Antibody (C-term) in HeLa cell line lysates (35ug/lane). This demonstrates the CPSF4L antibody detected the CPSF4L protein (arrow).