



Datasheet for ABIN951686
anti-CPSF7 antibody (C-Term)



[Go to Product page](#)

2 Images

Overview

Quantity:	0.4 mL
Target:	CPSF7
Binding Specificity:	AA 434-463, C-Term
Reactivity:	Human
Host:	Rabbit
Clonality:	Polyclonal
Conjugate:	This CPSF7 antibody is un-conjugated
Application:	Western Blotting (WB), Flow Cytometry (FACS), Enzyme Immunoassay (EIA)

Product Details

Immunogen:	KLH conjugated synthetic peptide between 434-463 amino acids from the C-terminal region of Human CPSF7. Genename: CPSF7
Isotype:	Ig Fraction
Specificity:	This antibody recognizes Human CPSF7 (C-term)
Purification:	Affinity Chromatography on Protein A

Target Details

Target:	CPSF7
Alternative Name:	CPSF7 (CPSF7 Products)
Background:	CPSF7 is probable a component of the cleavage factor Im complex (CFIm) that plays a key role

Target Details

in pre-mRNA 3' processing. Binds to cleavage and polyadenylation RNA substrates. Synonyms: CFIm59, CPSF59, Cleavage and polyadenylation specificity factor 59 kDa subunit, Cleavage and polyadenylation specificity factor subunit 7, Pre-mRNA cleavage factor Im 59 kDa subunit

Molecular Weight: 52050 Da

Gene ID: 79869

NCBI Accession: [NP_001129512](#)

Application Details

Application Notes: Optimal working dilution should be determined by the investigator.

Restrictions: For Research Use only

Handling

Format: Liquid

Concentration: 0.25 mg/mL

Buffer: PBS, 0.09 % Sodium Azide

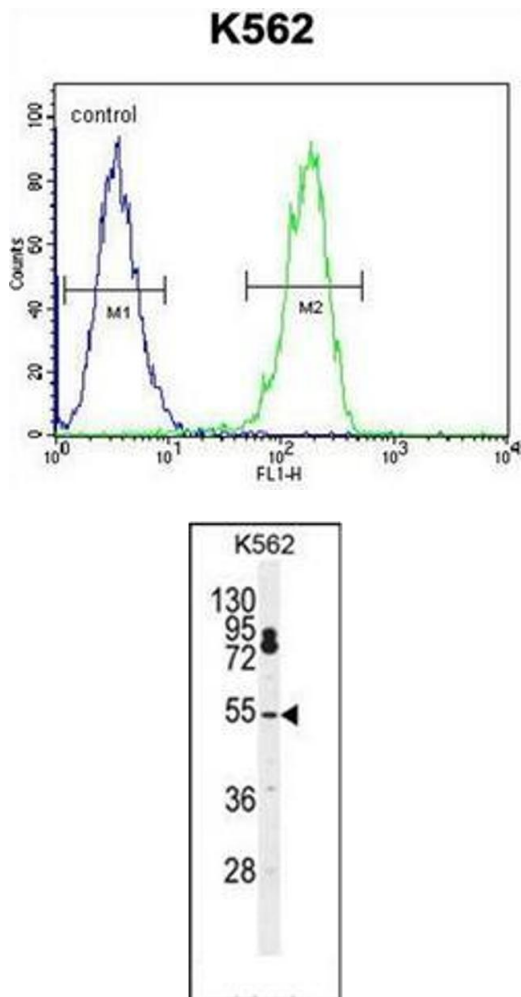
Preservative: Sodium azide

Precaution of Use: This product contains sodium azide: a POISONOUS AND HAZARDOUS SUBSTANCE which should be handled by trained staff only.

Handling Advice: Avoid repeated freezing and thawing.

Storage: 4 °C/-20 °C

Storage Comment: Store undiluted at 2-8 °C for one month or (in aliquots) at -20 °C for longer.



Flow Cytometry

Image 1. Flow Cytometric analysis of K562 cells using CPSF7 Antibody (C-term) Cat.-No AP51061PU-N (right histogram) compared to a negative control cell (left histogram). FITC-conjugated goat-anti-rabbit secondary antibodies were used for the analysis.

Western Blotting

Image 2. Western blot analysis of CPSF7 Antibody (C-term) Cat.-No AP51061PU-N in K562 cell line lysates (35ug/lane). This demonstrates the CPSF7 antibody detected the CPSF7 protein (arrow).