

Datasheet for ABIN951692

anti-CRABP2 antibody (C-Term)**2** Images[Go to Product page](#)

Overview

Quantity:	0.4 mL
Target:	CRABP2
Binding Specificity:	AA 86-116, C-Term
Reactivity:	Human
Host:	Rabbit
Clonality:	Polyclonal
Conjugate:	This CRABP2 antibody is un-conjugated
Application:	Western Blotting (WB), Enzyme Immunoassay (EIA)

Product Details

Immunogen:	KLH conjugated synthetic peptide between 86-116 amino acids from the C-terminal region of Human CRABP2. Genename: CRABP2
Isotype:	Ig Fraction
Specificity:	This antibody recognizes Human CRABP2 (C-term).
Purification:	Affinity Chromatography on Protein A

Target Details

Target:	CRABP2
Alternative Name:	CRABP2 (CRABP2 Products)
Background:	A number of specific carrier proteins for members of the vitamin A family have been

Target Details

discovered. Cellular retinoic acid binding proteins (CRABP) are low molecular weight proteins whose precise function remains unknown. The inducibility of the CRABP2 gene suggests that this isoform is important in retinoic acid-mediated regulation of human skin growth and differentiation. It has been postulated that the CRABP2 gene is transcriptionally regulated by a newly synthesized regulatory protein. [provided by RefSeq].Synonyms: CRABP-II, Cellular retinoic acid-binding protein 2, Cellular retinoic acid-binding protein II

Molecular Weight: 15693 Da

Gene ID: 1382

NCBI Accession: [NP_001186652](#)

Application Details

Application Notes: Optimal working dilution should be determined by the investigator.

Restrictions: For Research Use only

Handling

Format: Liquid

Concentration: 0.25 mg/mL

Buffer: PBS, 0.09 % Sodium Azide

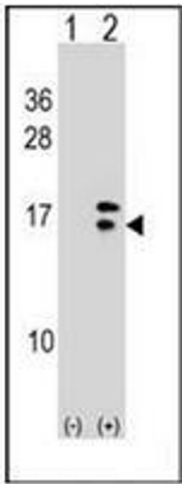
Preservative: Sodium azide

Precaution of Use: This product contains sodium azide: a POISONOUS AND HAZARDOUS SUBSTANCE which should be handled by trained staff only.

Handling Advice: Avoid repeated freezing and thawing.

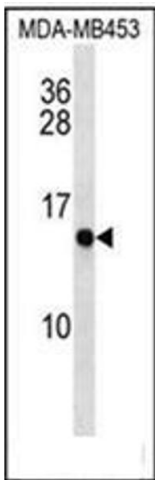
Storage: 4 °C/-20 °C

Storage Comment: Store undiluted at 2-8 °C for one month or (in aliquots) at -20 °C for longer.



Western Blotting

Image 1. Western blot analysis of CRABP2 (arrow) using CRABP2 Antibody (C-term) Cat.-No AP51069PU-N. 293 cell lysates (2 ug/lane) either nontransfected (Lane 1) or transiently transfected (Lane 2) with the CRABP2 gene.



Western Blotting

Image 2. Western blot analysis of CRABP2 Antibody (C-term) Cat.-No AP51069PU-N MDA-MB453 cell line lysates (35ug/lane). This demonstrates the CRABP2 antibody detected the CRABP2 protein (arrow).