

Datasheet for ABIN951693
anti-CRCT1 antibody (N-Term)

3 Images

[Go to Product page](#)

Overview

Quantity:	0.4 mL
Target:	CRCT1
Binding Specificity:	AA 1-32, N-Term
Reactivity:	Human
Host:	Rabbit
Clonality:	Polyclonal
Conjugate:	This CRCT1 antibody is un-conjugated
Application:	Western Blotting (WB), Flow Cytometry (FACS), Immunohistochemistry (Paraffin-embedded Sections) (IHC (p)), Enzyme Immunoassay (EIA)

Product Details

Immunogen:	KLH conjugated synthetic peptide between 1-32 amino acids from the N-terminal region of human CRCT1
Isotype:	Ig Fraction
Specificity:	This antibody reacts to CRCT1.
Cross-Reactivity (Details):	Species reactivity (tested):Human.
Purification:	Affinity chromatography on Protein A

Target Details

Target:	CRCT1
---------	-------

Target Details

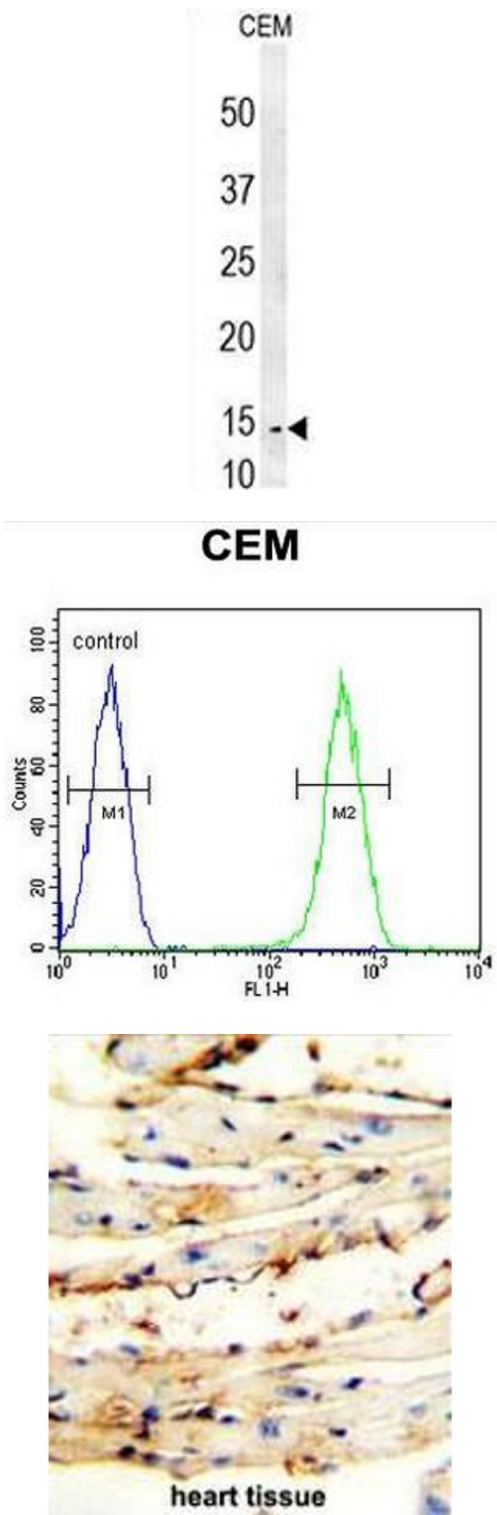
Alternative Name:	CRCT1 (CRCT1 Products)
Background:	Synonyms: C1orf42, NICE1
Molecular Weight:	9736 Da
Gene ID:	54544
NCBI Accession:	NP_061933

Application Details

Application Notes:	Optimal working dilution should be determined by the investigator.
Restrictions:	For Research Use only

Handling

Format:	Liquid
Concentration:	0.25 mg/mL
Buffer:	PBS, 0.09 % (W/V) sodium azide
Preservative:	Sodium azide
Precaution of Use:	This product contains sodium azide: a POISONOUS AND HAZARDOUS SUBSTANCE which should be handled by trained staff only.
Handling Advice:	Avoid repeated freezing and thawing.
Storage:	4 °C/-20 °C
Storage Comment:	Store undiluted at 2-8 °C for one month or (in aliquots) at -20 °C for longer.



Western Blotting

Image 1. CRCT1 Antibody (N-term) western blot analysis in CEM cell line lysates (35µg/lane).This demonstrates the CRCT1 antibody detected the CRCT1 protein (arrow).

Flow Cytometry

Image 2. CRCT1 Antibody (N-term) flow cytometric analysis of CEM cells (right histogram) compared to a negative control cell (left histogram).FITC-conjugated goat-anti-rabbit secondary antibodies were used for the analysis.

Immunohistochemistry (Paraffin-embedded Sections)

Image 3. CRCT1 antibody (N-term) immunohistochemistry analysis in formalin fixed and paraffin embedded mouse heart tissue followed by peroxidase conjugation of the secondary antibody and DAB staining. This data demonstrates the use of the CRCT1 antibody (N-term) for immunohistochemistry. Clinical relevance has not been evaluated.