

Datasheet for ABIN951694

anti-CREB1 antibody (Middle Region)[Go to Product page](#)**4** Images

Overview

Quantity:	0.4 mL
Target:	CREB1
Binding Specificity:	AA 112-140, Middle Region
Reactivity:	Human, Mouse
Host:	Rabbit
Clonality:	Polyclonal
Conjugate:	This CREB1 antibody is un-conjugated
Application:	Western Blotting (WB), Immunofluorescence (IF), Flow Cytometry (FACS), Enzyme Immunoassay (EIA)

Product Details

Immunogen:	KLH conjugated synthetic peptide between 112-140 amino acids from the Central region of human CREB1
Isotype:	Ig Fraction
Specificity:	This antibody reacts to CREB1.
Cross-Reactivity (Details):	Species reactivity (tested): Human and Mouse.
Purification:	Affinity chromatography on Protein A

Target Details

Target:	CREB1
---------	-------

Target Details

Alternative Name:	CREB1 (CREB1 Products)
Background:	This gene encodes a transcription factor that is a member of the leucine zipper family of DNA binding proteins. This protein binds as a homodimer to the cAMP-responsive element, an octameric palindrome. The protein is phosphorylated by several protein kinases, and induces transcription of genes in response to hormonal stimulation of the cAMP pathway. Alternate splicing of this gene results in two transcript variants encoding different isoforms.Synonyms: CREB-1, Cyclic AMP-responsive element-binding protein 1, cAMP-responsive element-binding protein 1
Molecular Weight:	36688 Da
Gene ID:	1385
NCBI Accession:	NP_004370
Pathways:	TLR Signaling , Fc-epsilon Receptor Signaling Pathway , EGFR Signaling Pathway , Neurotrophin Signaling Pathway , Thyroid Hormone Synthesis , Activation of Innate immune Response , Myometrial Relaxation and Contraction , Regulation of Cell Size , Toll-Like Receptors Cascades , G-protein mediated Events , Interaction of EGFR with phospholipase C-gamma , Positive Regulation of fat Cell Differentiation

Application Details

Application Notes:	Optimal working dilution should be determined by the investigator.
Restrictions:	For Research Use only

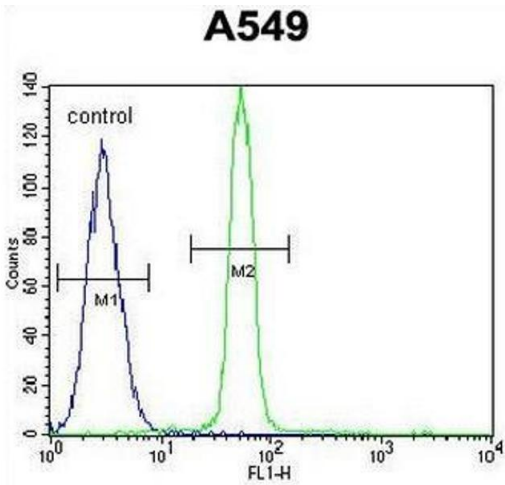
Handling

Format:	Liquid
Concentration:	0.25 mg/mL
Buffer:	PBS, 0.09 % (W/V) sodium azide
Preservative:	Sodium azide
Precaution of Use:	This product contains sodium azide: a POISONOUS AND HAZARDOUS SUBSTANCE which should be handled by trained staff only.
Handling Advice:	Avoid repeated freezing and thawing.
Storage:	4 °C/-20 °C

Handling

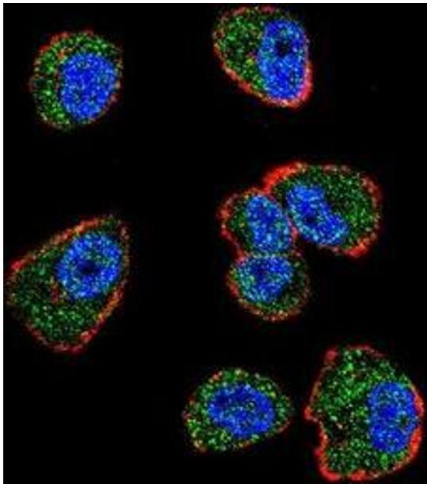
Storage Comment: Store undiluted at 2-8 °C for one month or (in aliquots) at -20 °C for longer.

Images



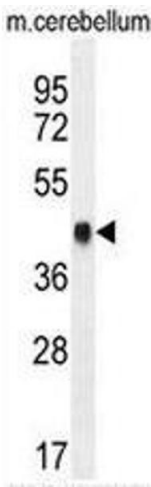
Flow Cytometry

Image 1. CREB1 Antibody (Center) flow cytometric analysis of A549 cells (right histogram) compared to a negative control cell (left histogram).FITC-conjugated goat-anti-rabbit secondary antibodies were used for the analysis.



Immunofluorescence

Image 2. Confocal immunofluorescent analysis of CREB1 Antibody (Center)(Cat#AP51071PU-N) with MDA-MB231 cell followed by Alexa Fluor 488-conjugated goat anti-rabbit IgG (green).Actin filaments have been labeled with Alexa Fluor 555 phalloidin (red).DAPI was used to stain the cell nuclear (blue).



Western Blotting

Image 3. CREB1 Antibody (Center) western blot analysis in mouse cerebellum tissue lysates (35µg/lane).This demonstrates the CREB1 antibody detected the CREB1 protein (arrow).

Please check the [product details page](#) for more images. Overall 4 images are available for ABIN951694.