

Datasheet for ABIN951699
anti-CREG1 antibody (N-Term)[Go to Product page](#)

2 Images

Overview

Quantity:	0.4 mL
Target:	CREG1
Binding Specificity:	AA 16-45, N-Term
Reactivity:	Human, Mouse
Host:	Rabbit
Clonality:	Polyclonal
Conjugate:	This CREG1 antibody is un-conjugated
Application:	Western Blotting (WB), Enzyme Immunoassay (EIA)

Product Details

Immunogen:	KLH conjugated synthetic peptide between 16-45 amino acids from the N-terminal region of human CREG1
Isotype:	Ig Fraction
Specificity:	This antibody reacts to CREG1.
Cross-Reactivity (Details):	Species reactivity (tested): Human and Mouse.
Purification:	Affinity chromatography on Protein A

Target Details

Target:	CREG1
Alternative Name:	CREG1 (CREG1 Products)

Target Details

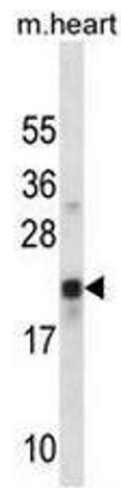
Background:	The adenovirus E1A protein both activates and represses gene expression to promote cellular proliferation and inhibit differentiation. The protein encoded by this gene antagonizes transcriptional activation and cellular transformation by E1A. This protein shares limited sequence similarity with E1A and binds both the general transcription factor TBP and the tumor suppressor pRb in vitro. This gene may contribute to the transcriptional control of cell growth and differentiation.Synonyms: CREG, Cellular repressor of E1A-stimulated genes 1
Molecular Weight:	24075 Da
Gene ID:	8804
NCBI Accession:	NP_003842

Application Details

Application Notes:	Optimal working dilution should be determined by the investigator.
Restrictions:	For Research Use only

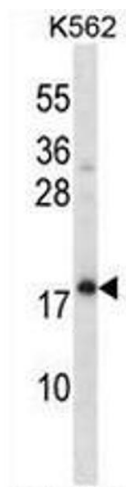
Handling

Format:	Liquid
Concentration:	0.25 mg/mL
Buffer:	PBS, 0.09 % (W/V) sodium azide
Preservative:	Sodium azide
Precaution of Use:	This product contains sodium azide: a POISONOUS AND HAZARDOUS SUBSTANCE which should be handled by trained staff only.
Handling Advice:	Avoid repeated freezing and thawing.
Storage:	4 °C/-20 °C
Storage Comment:	Store undiluted at 2-8 °C for one month or (in aliquots) at -20 °C for longer.



Western Blotting

Image 1. CREG1 Antibody (N-term) western blot analysis in mouse heart tissue lysates (35µg/lane). This demonstrates the CREG1 antibody detected the CREG1 protein (arrow).



Western Blotting

Image 2. CREG1 Antibody (N-term) western blot analysis in K562 cell line lysates (35µg/lane). This demonstrates the CREG1 antibody detected the CREG1 protein (arrow).