

Datasheet for ABIN951704
anti-CRHR2 antibody (AA 27-58)

3 Images

[Go to Product page](#)

Overview

Quantity:	0.4 mL
Target:	CRHR2
Binding Specificity:	AA 27-58
Reactivity:	Human
Host:	Rabbit
Clonality:	Polyclonal
Conjugate:	This CRHR2 antibody is un-conjugated
Application:	Western Blotting (WB), Flow Cytometry (FACS), Immunohistochemistry (Paraffin-embedded Sections) (IHC (p)), Enzyme Immunoassay (EIA)

Product Details

Immunogen:	KLH conjugated synthetic peptide between 27-58 amino acids from human CRHR2
Isotype:	Ig Fraction
Specificity:	This antibody reacts to CRFR2.
Cross-Reactivity (Details):	Species reactivity (tested):Human.
Purification:	Affinity chromatography on Protein A

Target Details

Target:	CRHR2
Alternative Name:	CRHR2 (CRHR2 Products)

Target Details

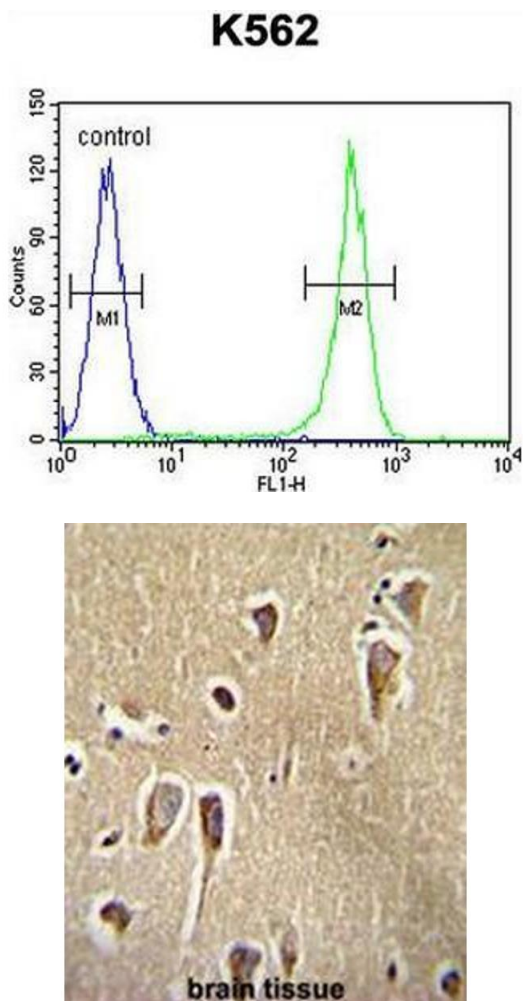
Background:	Liaw et al. (1996) [PubMed 8536644] stated that there are 2 G protein-coupled corticotropin-releasing hormone (CRH, MIM 122560) receptors, CRHR1 (MIM 122561) and CRHR2, which they termed the CRF2 receptor. CRH is a 41-amino acid peptide synthesized in the hypothalamus that is the principal neuroregulator of the hypothalamic-pituitary-adrenocortical axis and plays an important role in coordinating the endocrine, autonomic, and behavioral responses to stress and immune challenge.Synonyms: CRF-R 2, CRF2, CRF2R, CRH2R, Corticotropin-releasing factor receptor 2, Corticotropin-releasing hormone receptor 2
Molecular Weight:	47688 Da
Gene ID:	1395
NCBI Accession:	NP_001189404
Pathways:	Negative Regulation of Hormone Secretion , cAMP Metabolic Process , Feeding Behaviour

Application Details

Application Notes:	Optimal working dilution should be determined by the investigator.
Restrictions:	For Research Use only

Handling

Format:	Liquid
Concentration:	0.25 mg/mL
Buffer:	PBS, 0.09 % (W/V) sodium azide
Preservative:	Sodium azide
Precaution of Use:	This product contains sodium azide: a POISONOUS AND HAZARDOUS SUBSTANCE which should be handled by trained staff only.
Handling Advice:	Avoid repeated freezing and thawing.
Storage:	4 °C/-20 °C
Storage Comment:	Store undiluted at 2-8 °C for one month or (in aliquots) at -20 °C for longer.

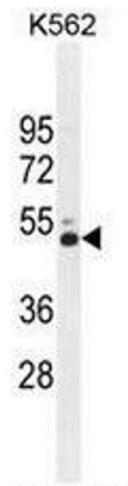


Flow Cytometry

Image 1. CRFR2 Antibody (D35) flow cytometric analysis of K562 cells (right histogram) compared to a negative control cell (left histogram). FITC-conjugated goat-anti-rabbit secondary antibodies were used for the analysis.

Immunohistochemistry (Paraffin-embedded Sections)

Image 2. CRFR2 Antibody (D35) immunohistochemistry analysis in formalin fixed and paraffin embedded human brain tissue followed by peroxidase conjugation of the secondary antibody and DAB staining. This data demonstrates the use of CRFR2 Antibody (D35) for immunohistochemistry. Clinical relevance has not been evaluated.



Western Blotting

Image 3. CRFR2 Antibody (D35) western blot analysis in K562 cell line lysates (35µg/lane). This demonstrates the CRFR2 antibody detected the CRFR2 protein (arrow).