

Datasheet for ABIN951708
anti-CROT antibody (N-Term)

3 Images

[Go to Product page](#)

Overview

Quantity:	0.4 mL
Target:	CROT
Binding Specificity:	AA 57-86, N-Term
Reactivity:	Human, Mouse
Host:	Rabbit
Clonality:	Polyclonal
Conjugate:	This CROT antibody is un-conjugated
Application:	Western Blotting (WB), Immunohistochemistry (Paraffin-embedded Sections) (IHC (p)), Flow Cytometry (FACS), Enzyme Immunoassay (EIA)

Product Details

Immunogen:	KLH conjugated synthetic peptide between 57~86 amino acids from the N-terminal region of human CROT
Isotype:	Ig Fraction
Specificity:	This antibody reacts to human and mouse CROT.
Purification:	Saturated Ammonium Sulfate (SAS) precipitation

Target Details

Target:	CROT
Alternative Name:	CROT (CROT Products)

Target Details

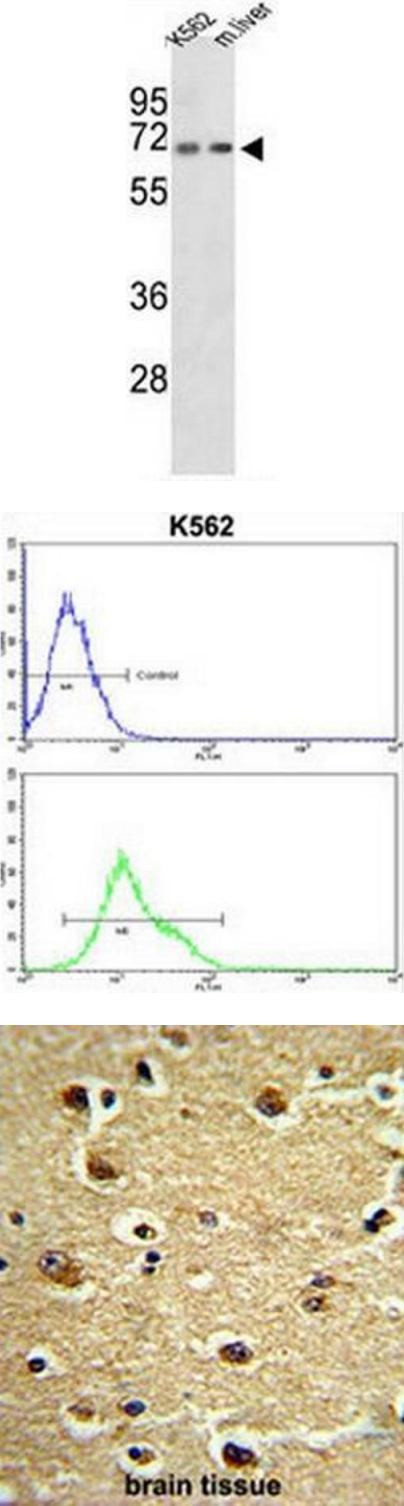
Background:	CROT encodes a member of the carnitine/choline acetyltransferase family. The encoded protein converts 4,8-dimethylnonanoyl-CoA to its corresponding carnitine ester. This transesterification occurs in the peroxisome and is necessary for transport of medium- and long- chain acyl-CoA molecules out of the peroxisome to the cytosol and mitochondria. The protein thus plays a role in lipid metabolism and fatty acid beta-oxidation. Alternatively spliced transcript variants have been described.Synonyms: COT, Peroxisomal carnitine O-octanoyltransferase
Molecular Weight:	70178 Da
Gene ID:	54677
NCBI Accession:	NP_066974
Pathways:	Monocarboxylic Acid Catabolic Process

Application Details

Application Notes:	Optimal working dilution should be determined by the investigator.
Restrictions:	For Research Use only

Handling

Format:	Liquid
Concentration:	0.25 mg/mL
Buffer:	PBS, 0.09 % (W/V) sodium azide
Preservative:	Sodium azide
Precaution of Use:	This product contains sodium azide: a POISONOUS AND HAZARDOUS SUBSTANCE which should be handled by trained staff only.
Handling Advice:	Avoid repeated freezing and thawing.
Storage:	4 °C/-20 °C
Storage Comment:	Store undiluted at 2-8 °C for one month or (in aliquots) at -20 °C for longer.



Western Blotting

Image 1. Western blot analysis of CROT Antibody (N-term) in K562 cell line and mouse liver tissue lysates (35µg/lane). CROT (arrow) was detected using the purified Pab.

Flow Cytometry

Image 2. CROT Antibody (N-term) flow cytometric analysis of k562 cells (bottom histogram) compared to a negative control cell (top histogram).FITC-conjugated goat-anti-rabbit secondary antibodies were used for the analysis.

Immunohistochemistry (Paraffin-embedded Sections)

Image 3. Formalin-fixed and paraffin-embedded human brain tissue reacted with CROT Antibody (N-term), which was peroxidase-conjugated to the secondary antibody, followed by DAB staining. This data demonstrates the use of this antibody for immunohistochemistry; clinical relevance has not been evaluated.