

Datasheet for ABIN951711  
**anti-CSAD antibody (Middle Region)**

## 2 Images

[Go to Product page](#)

## Overview

Quantity:	0.4 mL
Target:	CSAD
Binding Specificity:	AA 204-234, Middle Region
Reactivity:	Human
Host:	Rabbit
Clonality:	Polyclonal
Conjugate:	This CSAD antibody is un-conjugated
Application:	Western Blotting (WB), Immunohistochemistry (Paraffin-embedded Sections) (IHC (p)), Enzyme Immunoassay (EIA)

## Product Details

Immunogen:	KLH conjugated synthetic peptide between 204-234 amino acids from the Central region of human CSAD
Isotype:	Ig Fraction
Specificity:	This antibody reacts to human CSAD.
Purification:	Affinity chromatography on Protein A

## Target Details

Target:	CSAD
Alternative Name:	CSAD ( <a href="#">CSAD Products</a> )

## Target Details

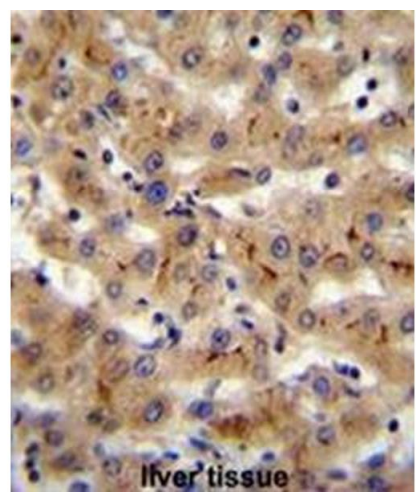
Background:	Cysteine sulfinic acid decarboxylase (CSAD) catalyses the penultimate and rate limiting step of taurine synthesis. Taurine is an amino sulphonic acid and is one of the most abundant amino acids in the brain. It has been found to be essential to a number of biological processes such as development of the brain and eye, reproduction, diabetes, osmoregulation as well as the anti-inflammatory activity of leukocytes.Synonyms: CSD, Cysteine sulfinic acid decarboxylase, Cysteine-sulfinic acid decarboxylase, Sulfinioalanine decarboxylase
Molecular Weight:	55023 Da
Gene ID:	51380
NCBI Accession:	<a href="#">NP_057073</a>

## Application Details

Application Notes:	Optimal working dilution should be determined by the investigator.
Restrictions:	For Research Use only

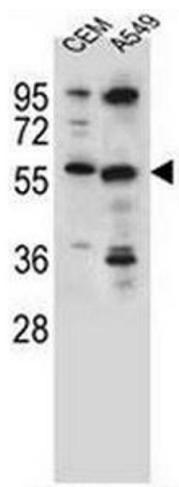
## Handling

Format:	Liquid
Concentration:	0.25 mg/mL
Buffer:	PBS, 0.09 % (W/V) sodium azide
Preservative:	Sodium azide
Precaution of Use:	This product contains sodium azide: a POISONOUS AND HAZARDOUS SUBSTANCE which should be handled by trained staff only.
Handling Advice:	Avoid repeated freezing and thawing.
Storage:	4 °C/-20 °C
Storage Comment:	Store undiluted at 2-8 °C for one month or (in aliquots) at -20 °C for longer.



**Immunohistochemistry (Paraffin-embedded Sections)**

**Image 1.** CSAD Antibody (Center) immunohistochemistry analysis in formalin fixed and paraffin embedded human liver tissue followed by peroxidase conjugation of the secondary antibody and DAB staining. This data demonstrates the use of CSAD Antibody (Center) for immunohistochemistry. Clinical relevance has not been evaluated.



**Western Blotting**

**Image 2.** CSAD Antibody (Center) western blot analysis in CEM, A549 cell line lysates (35 µg/lane). This demonstrates the CSAD antibody detected the CSAD protein (arrow).