

Datasheet for ABIN951713
anti-CSPP1 antibody (N-Term)

3 Images

[Go to Product page](#)

Overview

Quantity:	0.4 mL
Target:	CSPP1 (Cspp1)
Binding Specificity:	AA 276-306, N-Term
Reactivity:	Human
Host:	Rabbit
Clonality:	Polyclonal
Conjugate:	This CSPP1 antibody is un-conjugated
Application:	Western Blotting (WB), Flow Cytometry (FACS), Immunohistochemistry (Paraffin-embedded Sections) (IHC (p)), Enzyme Immunoassay (EIA)

Product Details

Immunogen:	KLH conjugated synthetic peptide between 276~306 amino acids from the N-terminal region of human CSPP1
Isotype:	Ig Fraction
Specificity:	This antibody reacts to human CSPP1.
Purification:	Affinity chromatography on Protein A

Target Details

Target:	CSPP1 (Cspp1)
Alternative Name:	CSPP1 (Cspp1 Products)

Target Details

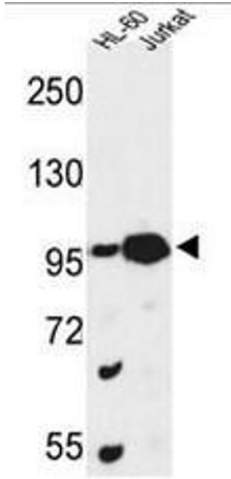
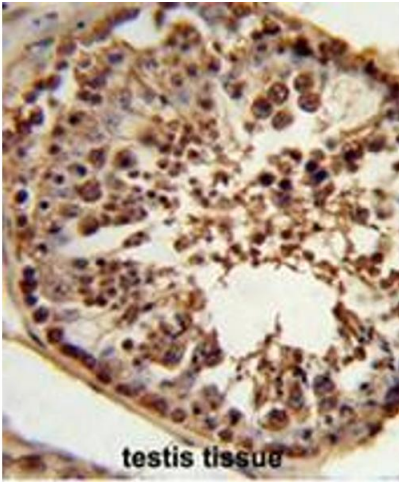
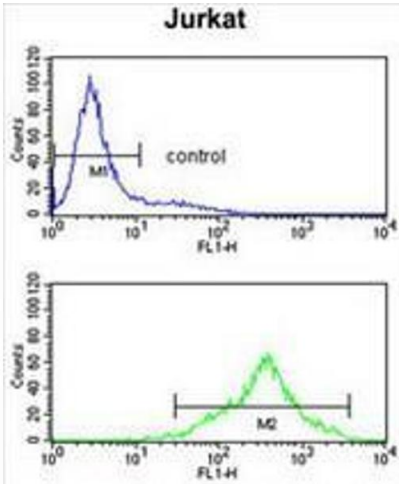
Background:	CSPP1 interacts with centrosomes and microtubules and plays a role in cell-cycle progression and spindle organization.Synonyms: CSPP, Centrosome and spindle pole-associated protein 1
Molecular Weight:	141751 Da
Gene ID:	79848
NCBI Accession:	NP_079066

Application Details

Application Notes:	Optimal working dilution should be determined by the investigator.
Restrictions:	For Research Use only

Handling

Format:	Liquid
Concentration:	0.25 mg/mL
Buffer:	PBS, 0.09 % (W/V) sodium azide
Preservative:	Sodium azide
Precaution of Use:	This product contains sodium azide: a POISONOUS AND HAZARDOUS SUBSTANCE which should be handled by trained staff only.
Handling Advice:	Avoid repeated freezing and thawing.
Storage:	4 °C/-20 °C
Storage Comment:	Store undiluted at 2-8 °C for one month or (in aliquots) at -20 °C for longer.



Flow Cytometry

Image 1. CSPP1 Antibody (N-term) flow cytometry analysis of Jurkat cells (bottom histogram) compared to a negative control cell (top histogram).FITC-conjugated goat-anti-rabbit secondary antibodies were used for the analysis.

Immunohistochemistry (Paraffin-embedded Sections)

Image 2. Formalin-fixed and paraffin-embedded human testis tissue reacted with CSPP1 Antibody (N-term), which was peroxidase-conjugated to the secondary antibody, followed by DAB staining. This data demonstrates the use of this antibody for immunohistochemistry; clinical relevance has not been evaluated.

Western Blotting

Image 3. Western blot analysis of CSPP1 Antibody (N-term) in HL-60, Jurkat cell line lysates (35µg/lane). CSPP1 (arrow) was detected using the purified Pab.