

Datasheet for ABIN951716
anti-FAM46D antibody (Middle Region)[Go to Product page](#)

2 Images

Overview

Quantity:	0.4 mL
Target:	FAM46D
Binding Specificity:	AA 210-239, Middle Region
Reactivity:	Human
Host:	Rabbit
Clonality:	Polyclonal
Conjugate:	This FAM46D antibody is un-conjugated
Application:	Western Blotting (WB), Flow Cytometry (FACS), Enzyme Immunoassay (EIA)

Product Details

Immunogen:	KLH conjugated synthetic peptide between 210-239 amino acids from the Central region of human CT112
Isotype:	Ig Fraction
Specificity:	This antibody reacts to human CT112.
Purification:	Affinity chromatography on Protein A

Target Details

Target:	FAM46D
Alternative Name:	CT112 (FAM46D Products)
Background:	Synonyms: C20orf112, C20orf113, Uncharacterized protein C20orf112

Target Details

Molecular Weight:	47215 Da
Gene ID:	140688
NCBI Accession:	NP_542183

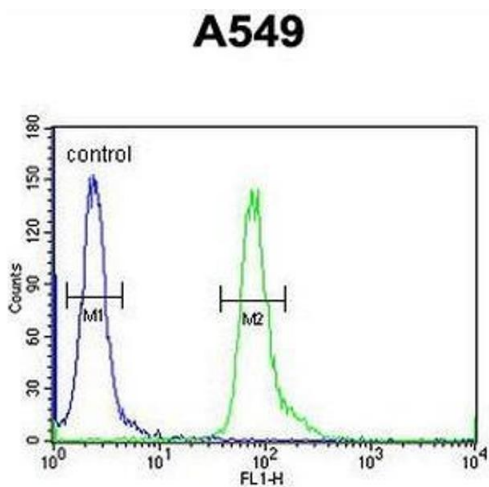
Application Details

Application Notes:	Optimal working dilution should be determined by the investigator.
Restrictions:	For Research Use only

Handling

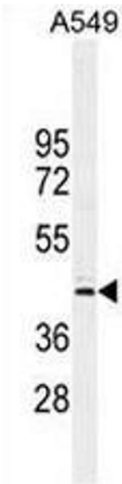
Format:	Liquid
Concentration:	0.25 mg/mL
Buffer:	PBS, 0.09 % (W/V) sodium azide.
Preservative:	Sodium azide
Precaution of Use:	This product contains sodium azide: a POISONOUS AND HAZARDOUS SUBSTANCE which should be handled by trained staff only.
Handling Advice:	Avoid repeated freezing and thawing.
Storage:	4 °C/-20 °C
Storage Comment:	Store undiluted at 2-8 °C for one month or (in aliquots) at -20 °C for longer.

Images



Flow Cytometry

Image 1. CT112 Antibody (Center) flow cytometric analysis of A549 cells (right histogram) compared to a negative control cell (left histogram). FITC-conjugated goat-anti-rabbit secondary antibodies were used for the analysis.



Western Blotting

Image 2. CT112 Antibody (Center) western blot analysis in A549 cell line lysates (35µg/lane). This demonstrates the CT112 antibody detected the CT112 protein (arrow).