



Datasheet for ABIN951717
anti-C20ORF173 antibody (Middle Region)



[Go to Product page](#)

2 Images

Overview

Quantity:	0.4 mL
Target:	C20ORF173
Binding Specificity:	AA 51-80, Middle Region
Reactivity:	Human
Host:	Rabbit
Clonality:	Polyclonal
Conjugate:	This C20ORF173 antibody is un-conjugated
Application:	Western Blotting (WB), Immunohistochemistry (Paraffin-embedded Sections) (IHC (p)), Enzyme Immunoassay (EIA)

Product Details

Immunogen:	KLH conjugated synthetic peptide between 51-80 amino acids from the Central region of human CT173
Isotype:	Ig Fraction
Specificity:	This antibody reacts to CT173.
Purification:	Affinity chromatography on Protein A

Target Details

Target:	C20ORF173
Abstract:	C20ORF173 Products

Target Details

Background:	Synonyms: C20orf173, Uncharacterized protein C20orf173
Molecular Weight:	16552 Da
Gene ID:	140873
NCBI Accession:	NP_001138822

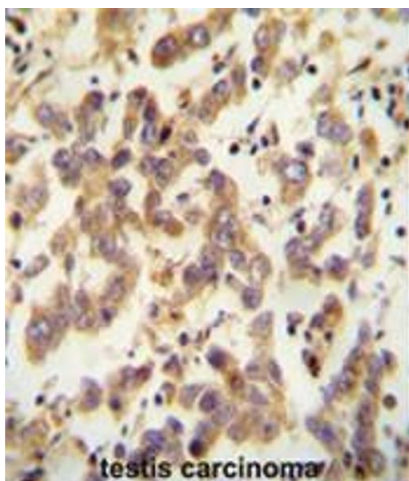
Application Details

Application Notes:	Optimal working dilution should be determined by the investigator.
Restrictions:	For Research Use only

Handling

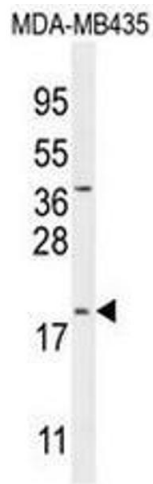
Format:	Liquid
Concentration:	0.25 mg/mL
Buffer:	PBS, 0.09 % (W/V) sodium azide
Preservative:	Sodium azide
Precaution of Use:	This product contains sodium azide: a POISONOUS AND HAZARDOUS SUBSTANCE which should be handled by trained staff only.
Handling Advice:	Avoid repeated freezing and thawing.
Storage:	4 °C/-20 °C
Storage Comment:	Store undiluted at 2-8 °C for one month or (in aliquots) at -20 °C for longer.

Images



Immunohistochemistry (Paraffin-embedded Sections)

Image 1. CT173 antibody (Center) immunohistochemistry analysis in formalin fixed and paraffin embedded human testis carcinoma followed by peroxidase conjugation of the secondary antibody and DAB staining. This data demonstrates the use of the CT173 antibody (Center) for immunohistochemistry. Clinical relevance has not been evaluated.



Western Blotting

Image 2. CT173 Antibody (Center) western blot analysis in MDA-MB435 cell line lysates (35µg/lane). This demonstrates the CT173 antibody detected the CT173 protein (arrow).