



Datasheet for ABIN951718 anti-CT45A2 antibody (N-Term)



[Go to Product page](#)

2 Images

Overview

Quantity:	0.4 mL
Target:	CT45A2
Binding Specificity:	AA 1-30, N-Term
Reactivity:	Human
Host:	Rabbit
Clonality:	Polyclonal
Conjugate:	This CT45A2 antibody is un-conjugated
Application:	Enzyme Immunoassay (EIA), Flow Cytometry (FACS), Western Blotting (WB)

Product Details

Immunogen:	KLH conjugated synthetic peptide between 1-30 amino acids from the N-terminal region of human CT45A
Isotype:	Ig Fraction
Specificity:	This antibody reacts to human CT45A4/CT45A3/CT45A2/CT45A1/CT45A6.
Purification:	Affinity chromatography on Protein A

Target Details

Target:	CT45A2
Alternative Name:	CT45-2 (CT45A2 Products)
Background:	Synonyms: 45A2, Cancer/testis antigen 45-2, Cancer/testis antigen family 45 member A2

Target Details

Molecular Weight:	21273 Da
Gene ID:	728911
NCBI Accession:	NP_689795

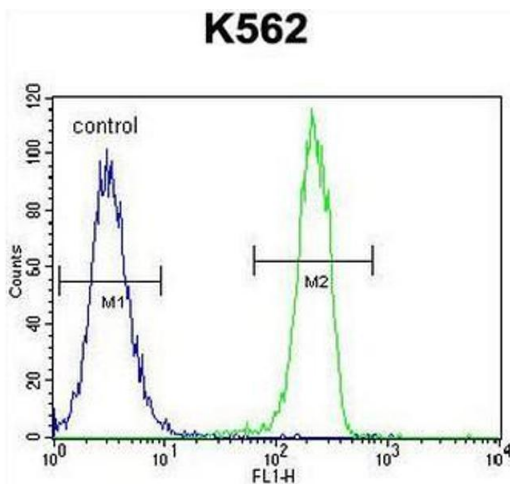
Application Details

Application Notes:	Optimal working dilution should be determined by the investigator.
Restrictions:	For Research Use only

Handling

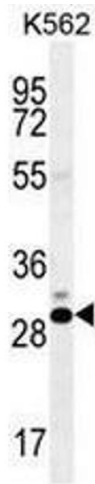
Format:	Liquid
Concentration:	0.25 mg/mL
Buffer:	PBS, 0.09 % (W/V) sodium azide
Preservative:	Sodium azide
Precaution of Use:	This product contains sodium azide: a POISONOUS AND HAZARDOUS SUBSTANCE which should be handled by trained staff only.
Handling Advice:	Avoid repeated freezing and thawing.
Storage:	4 °C/-20 °C
Storage Comment:	Store undiluted at 2-8 °C for one month or (in aliquots) at -20 °C for longer.

Images



Flow Cytometry

Image 1. CT45A1 Antibody (N-term) flow cytometric analysis of K562 cells (right histogram) compared to a negative control cell (left histogram). FITC-conjugated goat-anti-rabbit secondary antibodies were used for the analysis.



Western Blotting

Image 2. CT45A Antibody (N-term) western blot analysis in K562 cell line lysates (35µg/lane). This demonstrates the CT45A antibody detected the CT45A protein (arrow).