

Datasheet for ABIN951719
anti-CT45A5 antibody (Middle Region)



[Go to Product page](#)

1 Image

Overview

Quantity:	0.4 mL
Target:	CT45A5
Binding Specificity:	AA 107-137, Middle Region
Reactivity:	Human
Host:	Rabbit
Clonality:	Polyclonal
Conjugate:	This CT45A5 antibody is un-conjugated
Application:	Enzyme Immunoassay (EIA), Western Blotting (WB)

Product Details

Immunogen:	KLH conjugated synthetic peptide between 107-137 amino acids from the Central region of human CT45A
Isotype:	Ig Fraction
Specificity:	This antibody reacts to human CT45A.
Purification:	Affinity chromatography on Protein A

Target Details

Target:	CT45A5
Alternative Name:	CT45-5 (CT45A5 Products)
Background:	Synonyms: 45A5, Cancer/testis antigen 45-5, Cancer/testis antigen family 45 member A5

Target Details

Molecular Weight:	21331 Da
Gene ID:	441521
NCBI Accession:	NP_001007552

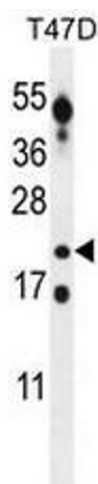
Application Details

Application Notes:	Optimal working dilution should be determined by the investigator.
Restrictions:	For Research Use only

Handling

Format:	Liquid
Concentration:	0.25 mg/mL
Buffer:	PBS, 0.09 % (W/V) sodium azide
Preservative:	Sodium azide
Precaution of Use:	This product contains sodium azide: a POISONOUS AND HAZARDOUS SUBSTANCE which should be handled by trained staff only.
Handling Advice:	Avoid repeated freezing and thawing.
Storage:	4 °C/-20 °C
Storage Comment:	Store undiluted at 2-8 °C for one month or (in aliquots) at -20 °C for longer.

Images



Western Blotting

Image 1. CT45A Antibody (Center) western blot analysis in T47D cell line lysates (35µg/lane). This demonstrates the CT45A antibody detected the CT45A protein (arrow).