

Datasheet for ABIN951729

anti-CTPS2 antibody (C-Term)**2** Images[Go to Product page](#)

Overview

Quantity:	0.4 mL
Target:	CTPS2
Binding Specificity:	AA 449-479, C-Term
Reactivity:	Human
Host:	Rabbit
Clonality:	Polyclonal
Conjugate:	This CTPS2 antibody is un-conjugated
Application:	Western Blotting (WB), Enzyme Immunoassay (EIA)

Product Details

Immunogen:	KLH conjugated synthetic peptide between 449-479 amino acids from the C-terminal region of human CTPS2
Isotype:	Ig Fraction
Specificity:	This antibody reacts to CTPS2.
Cross-Reactivity (Details):	Species reactivity (tested):Human.
Purification:	Affinity chromatography on Protein A

Target Details

Target:	CTPS2
Alternative Name:	CTP Synthase 2 (CTPS2 Products)

Target Details

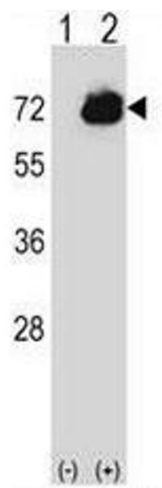
Background:	The protein encoded by this gene catalyzes the formation of CTP from UTP with the concomitant deamination of glutamine to glutamate. This protein is the rate-limiting enzyme in the synthesis of cytosine nucleotides, which play an important role in various metabolic processes and provide the precursors necessary for the synthesis of RNA and DNA. Cancer cells that exhibit increased cell proliferation also exhibit an increased activity of this encoded protein. Thus, this protein is an attractive target for selective chemotherapy. Three alternatively spliced transcript variants encoding the same protein have been described for this gene.Synonyms: CTP synthetase 2, CTPS2, UTP-ammonia ligase 2
Molecular Weight:	65678 Da
Gene ID:	56474
NCBI Accession:	NP_001137474
Pathways:	Ribonucleoside Biosynthetic Process

Application Details

Application Notes:	Optimal working dilution should be determined by the investigator.
Restrictions:	For Research Use only

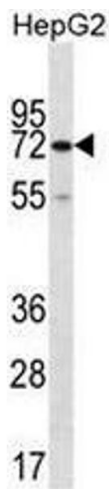
Handling

Format:	Liquid
Concentration:	0.25 mg/mL
Buffer:	PBS, 0.09 % (W/V) sodium azide
Preservative:	Sodium azide
Precaution of Use:	This product contains sodium azide: a POISONOUS AND HAZARDOUS SUBSTANCE which should be handled by trained staff only.
Handling Advice:	Avoid repeated freezing and thawing.
Storage:	4 °C/-20 °C
Storage Comment:	Store the antibody undiluted at 2-8 °C for one month or (in aliquots) at -20 °C for longer.



Western Blotting

Image 1. Western blot analysis of CTPS2 (arrow) using rabbit polyclonal CTPS2 Antibody (C-term) . 293 cell lysates (2µg/lane) either nontransfected (Lane 1) or transiently transfected (Lane 2) with the CTPS2 gene.



Western Blotting

Image 2. CTPS2 Antibody (C-term) western blot analysis in HepG2 cell line lysates (35µg/lane).This demonstrates the CTPS2 antibody detected the CTPS2 protein (arrow).