

Datasheet for ABIN951733
anti-CUTC antibody (Middle Region)



[Go to Product page](#)

1 Image

Overview

Quantity:	0.4 mL
Target:	CUTC
Binding Specificity:	AA 66-94, Middle Region
Reactivity:	Human
Host:	Rabbit
Clonality:	Polyclonal
Conjugate:	This CUTC antibody is un-conjugated
Application:	Western Blotting (WB), Enzyme Immunoassay (EIA)

Product Details

Immunogen:	KLH conjugated synthetic peptide between 66-94 amino acids from the Central region of human CUTC
Isotype:	Ig Fraction
Specificity:	This antibody reacts to CUTC.
Cross-Reactivity (Details):	Species reactivity (tested):Human.
Purification:	Affinity chromatography on Protein A

Target Details

Target:	CUTC
Alternative Name:	CUTC (CUTC Products)

Target Details

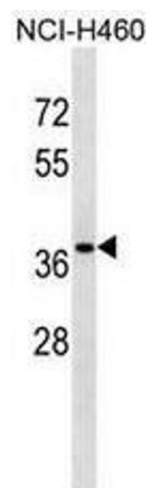
Background:	Members of the CUT family of copper transporters are associated with copper homeostasis and are involved in the uptake, storage, delivery, and efflux of copper (Gupta et al., 1995 [PubMed 7635807], Li et al., 2005 [PubMed 16182249]).Synonyms: CGI-32, Copper homeostasis protein cutC homolog
Molecular Weight:	29341 Da
Gene ID:	51076
NCBI Accession:	NP_057044
Pathways:	Transition Metal Ion Homeostasis

Application Details

Application Notes:	Optimal working dilution should be determined by the investigator.
Restrictions:	For Research Use only

Handling

Format:	Liquid
Concentration:	0.25 mg/mL
Buffer:	PBS, 0.09 % (W/V) sodium azide
Preservative:	Sodium azide
Precaution of Use:	This product contains sodium azide: a POISONOUS AND HAZARDOUS SUBSTANCE which should be handled by trained staff only.
Handling Advice:	Avoid repeated freezing and thawing.
Storage:	4 °C/-20 °C
Storage Comment:	Store the antibody undiluted at 2-8 °C for one month or (in aliquots) at -20 °C for longer.



Western Blotting

Image 1. CUTC Antibody (Center) western blot analysis in NCI-H460 cell line lysates (35µg/lane). This demonstrates the CUTC antibody detected the CUTC protein (arrow).