

Datasheet for ABIN951734  
**anti-CUZD1 antibody (C-Term)**[Go to Product page](#)

## 3 Images

## Overview

Quantity:	0.4 mL
Target:	CUZD1
Binding Specificity:	AA 586-614, C-Term
Reactivity:	Human
Host:	Rabbit
Clonality:	Polyclonal
Conjugate:	This CUZD1 antibody is un-conjugated
Application:	Western Blotting (WB), Immunofluorescence (IF), Enzyme Immunoassay (EIA)

## Product Details

Immunogen:	KLH conjugated synthetic peptide between 586-614 amino acids from the C-terminal region of human CUZD1
Isotype:	Ig Fraction
Specificity:	This antibody reacts to CUZD1.
Cross-Reactivity (Details):	Species reactivity (tested):Human.
Purification:	Affinity chromatography on Protein A

## Target Details

Target:	CUZD1
Alternative Name:	CUZD1 ( <a href="#">CUZD1 Products</a> )

## Target Details

**Background:** Potent and specific cellular inhibitor of CaM-kinase II (CAMK2). Traps Ca(2+)/calmodulin on CAMK2. May play an important role in the regulation of cell growth when overexpressed in colon adenocarcinoma LoVo cells. Traps Ca(2+)/calmodulin on CAMK2. Synonyms: CUB and ZP domain-containing protein 1, CUB and zona pellucida-like domain-containing protein 1

**Molecular Weight:** 68153 Da, Isoform 36kd Da

**Gene ID:** 50624

**NCBI Accession:** [NP\\_071317](#)

## Application Details

**Application Notes:** Optimal working dilution should be determined by the investigator.

**Restrictions:** For Research Use only

## Handling

**Format:** Liquid

**Concentration:** 0.25 mg/mL

**Buffer:** PBS, 0.09 % (W/V) sodium azide

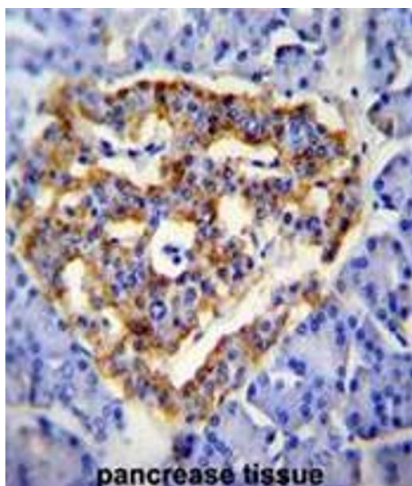
**Preservative:** Sodium azide

**Precaution of Use:** This product contains sodium azide: a POISONOUS AND HAZARDOUS SUBSTANCE which should be handled by trained staff only.

**Handling Advice:** Avoid repeated freezing and thawing.

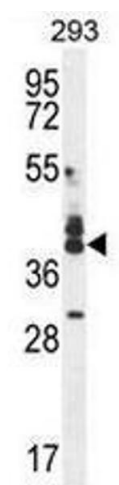
**Storage:** 4 °C/-20 °C

**Storage Comment:** Store the antibody undiluted at 2-8 °C for one month or (in aliquots) at -20 °C for longer.



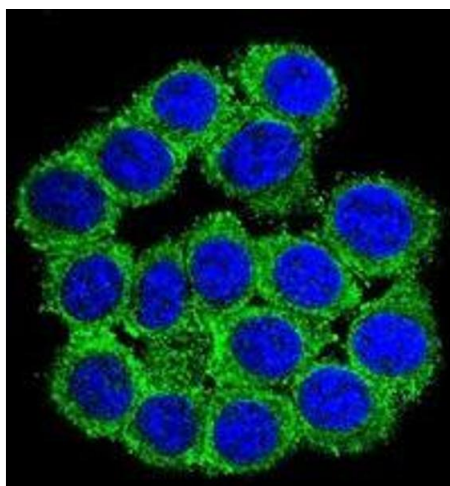
#### Immunohistochemistry (Paraffin-embedded Sections)

**Image 1.** CUZD1 Antibody (C-term) immunohistochemistry analysis in formalin fixed and paraffin embedded human pancreas tissue followed by peroxidase conjugation of the secondary antibody and DAB staining. This data demonstrates the use of CUZD1 Antibody (C-term) for immunohistochemistry. Clinical relevance has not been evaluated.



#### Western Blotting

**Image 2.** CUZD1 Antibody (C-term) western blot analysis in 293 cell line lysates (35µg/lane). This demonstrates the CUZD1 antibody detected the CUZD1 protein (arrow).



#### Immunofluorescence

**Image 3.** Confocal immunofluorescent analysis of CUZD1 Antibody (C-term) (Cat#AP51141PU-N) with 293 cell followed by Alexa Fluor 488-conjugated goat anti-rabbit IgG (green). DAPI was used to stain the cell nuclear (blue).