



Datasheet for ABIN951746
anti-CYB561D1 antibody (C-Term)



[Go to Product page](#)

3 Images

Overview

Quantity:	0.4 mL
Target:	CYB561D1
Binding Specificity:	AA 200-229, C-Term
Reactivity:	Human, Mouse
Host:	Rabbit
Clonality:	Polyclonal
Conjugate:	This CYB561D1 antibody is un-conjugated
Application:	Western Blotting (WB), Flow Cytometry (FACS), Immunohistochemistry (Paraffin-embedded Sections) (IHC (p)), Enzyme Immunoassay (EIA)

Product Details

Immunogen:	Synthetic peptide - KLH conjugated - corresponding to the C-terminal region (between 200-229aa) of human CYB561D1.
Isotype:	Ig Fraction
Specificity:	This antibody detects CYB561D1.
Cross-Reactivity (Details):	Species reactivity (tested):Human, Mouse
Purification:	Purified through a protein A column, followed by peptide affinity purification.

Target Details

Target:	CYB561D1
---------	----------

Target Details

Alternative Name:	CYB561D1 (CYB561D1 Products)
Background:	Synonyms: Cytochrome b561 domain-containing protein 1
Gene ID:	284613
NCBI Accession:	NP_001127872

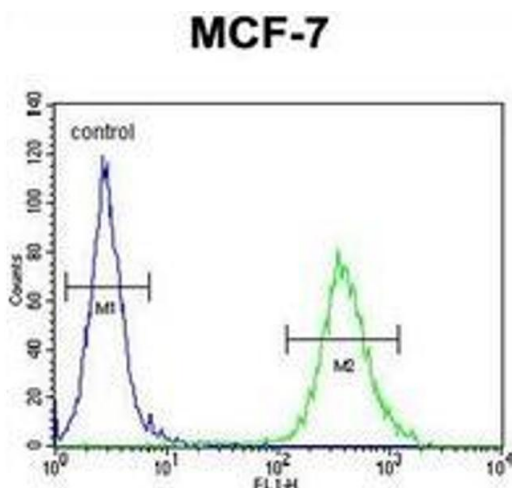
Application Details

Application Notes:	Optimal working dilution should be determined by the investigator.
Restrictions:	For Research Use only

Handling

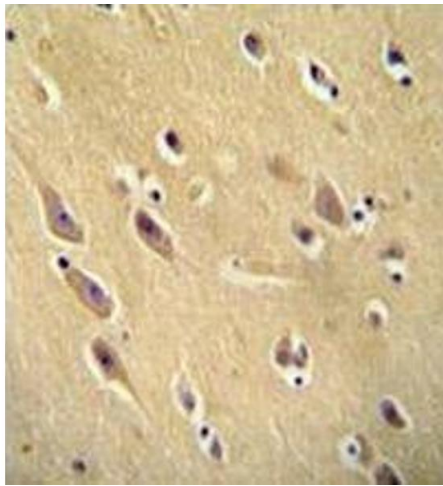
Format:	Liquid
Concentration:	0.25 mg/mL
Buffer:	PBS with 0.09 % (W/V) Sodium Azide.
Preservative:	Sodium azide
Precaution of Use:	This product contains sodium azide: a POISONOUS AND HAZARDOUS SUBSTANCE which should be handled by trained staff only.
Handling Advice:	Avoid repeated freezing and thawing.
Storage:	4 °C/-20 °C
Storage Comment:	Store the antibody undiluted at 2-8 °C for one month or (in aliquots) at -20 °C for longer.

Images



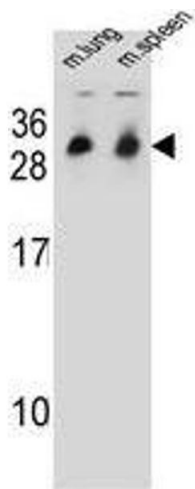
Flow Cytometry

Image 1. Flow cytometric analysis of MCF-7 cells (right histogram) compared to a negative control cell (left histogram) using CYB561D1 Antibody (C-term). FITC-conjugated goat-anti-rabbit secondary antibodies were used for the analysis.



Immunohistochemistry (Paraffin-embedded Sections)

Image 2. Immunohistochemistry analysis in human brain tissue (formalin-fixed, paraffin-embedded) using CYB561D1 Antibody (C-term), followed by peroxidase conjugation of the secondary antibody and DAB staining. This data demonstrates the use of the CYB561D1 antibody for immunohistochemistry. Clinical relevance has not been evaluated.



Western Blotting

Image 3. Western blot analysis in mouse lung/spleen tissue lysates (35ug/lane) using CYB561D1 Antibody . This demonstrates the CYB561D1 antibody detected the CYB561D1 protein (arrow).