



[Go to Product page](#)

Datasheet for ABIN951747

## anti-CYB5D2 antibody (C-Term)

### 1 Image

#### Overview

Quantity:	0.4 mL
Target:	CYB5D2
Binding Specificity:	AA 194-225, C-Term
Reactivity:	Mouse, Human
Host:	Rabbit
Clonality:	Polyclonal
Conjugate:	This CYB5D2 antibody is un-conjugated
Application:	Western Blotting (WB), Enzyme Immunoassay (EIA)

#### Product Details

Immunogen:	Synthetic peptide - KLH conjugated - corresponding to the C-terminal region (between 194-225aa) of human CYB5D2.
Isotype:	Ig Fraction
Specificity:	This antibody detects CYB5D2 at C-term.
Cross-Reactivity (Details):	Species reactivity (tested): Human, Mouse
Purification:	Purified through a protein A column; followed by peptide affinity purification.

#### Target Details

Target:	CYB5D2
Alternative Name:	CYB5D2 ( <a href="#">CYB5D2 Products</a> )

## Target Details

Background:	Heme-binding protein which promotes neuronal but not astrocyte differentiation (By similarity).Synonyms: Neuferricin
Gene ID:	124936
NCBI Accession:	<a href="#">NP_653212</a>

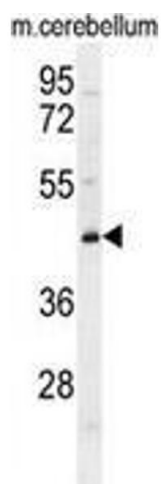
## Application Details

Application Notes:	Optimal working dilution should be determined by the investigator.
Restrictions:	For Research Use only

## Handling

Format:	Liquid
Concentration:	0.25 mg/mL
Buffer:	PBS with 0.09 % (W/V) Sodium Azide.
Preservative:	Sodium azide
Precaution of Use:	This product contains sodium azide: a POISONOUS AND HAZARDOUS SUBSTANCE which should be handled by trained staff only.
Handling Advice:	Avoid repeated freezing and thawing.
Storage:	4 °C/-20 °C
Storage Comment:	Store the antibody undiluted at 2-8 °C for one month or (in aliquots) at -20 °C for longer.

## Images



### Western Blotting

**Image 1.** Western blot analysis in mouse cerebellum tissue lysates (35ug/lane) using CYB5D2 Antibody (C-term). This demonstrates the CYB5D2 antibody detected the CYB5D2 protein (arrow).