



[Go to Product page](#)

Datasheet for ABIN951753

## anti-Cyclin C antibody (N-Term)

### 2 Images

#### Overview

Quantity:	0.4 mL
Target:	Cyclin C (CCNC)
Binding Specificity:	AA 1-30, N-Term
Reactivity:	Human
Host:	Rabbit
Clonality:	Polyclonal
Conjugate:	This Cyclin C antibody is un-conjugated
Application:	Western Blotting (WB), Flow Cytometry (FACS), Enzyme Immunoassay (EIA)

#### Product Details

Immunogen:	KLH conjugated synthetic peptide between 1-30 amino acids from the N-terminal region of human CCNC
Isotype:	Ig Fraction
Specificity:	This antibody reacts to CCNC.
Cross-Reactivity (Details):	Species reactivity (tested):Human.
Purification:	Saturated Ammonium Sulfate (SAS) precipitation

#### Target Details

Target:	Cyclin C (CCNC)
Alternative Name:	Cyclin C ( <a href="#">CCNC Products</a> )

## Target Details

---

Background:	The protein encoded by this gene is a member of the cyclin family of proteins. The encoded protein interacts with cyclin-dependent kinase 8 and induces the phosphorylation of the carboxy-terminal domain of the large subunit of RNA polymerase II. The level of mRNAs for this gene peaks in the G1 phase of the cell cycle. Two transcript variants encoding different isoforms have been found for this gene.Synonyms: CCNC, Cyclin-C, SRB11 homolog, hSRB11
Molecular Weight:	33243 Da
Gene ID:	892
NCBI Accession:	<a href="#">NP_005181</a>
Pathways:	<a href="#">Cell Division Cycle</a> , <a href="#">Regulation of Lipid Metabolism by PPARalpha</a>

## Application Details

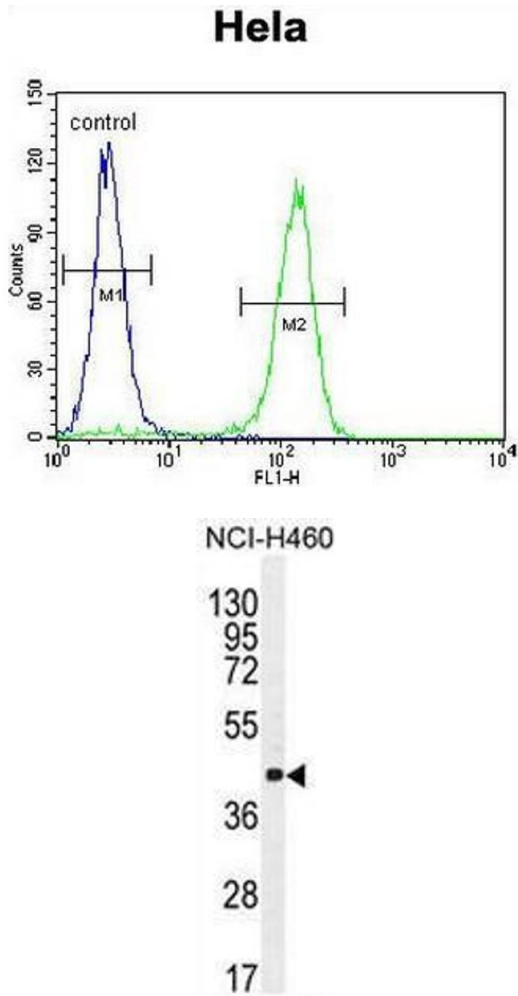
---

Application Notes:	Optimal working dilution should be determined by the investigator.
Restrictions:	For Research Use only

## Handling

---

Format:	Liquid
Concentration:	0.25 mg/mL
Buffer:	PBS, 0.09 % (W/V) sodium azide
Preservative:	Sodium azide
Precaution of Use:	This product contains sodium azide: a POISONOUS AND HAZARDOUS SUBSTANCE which should be handled by trained staff only.
Handling Advice:	Avoid repeated freezing and thawing.
Storage:	4 °C/-20 °C
Storage Comment:	Store undiluted at 2-8 °C for one month or (in aliquots) at -20 °C for longer.



### Flow Cytometry

**Image 1.** CCNC Antibody (N-term) flow cytometric analysis of Hela cells (right histogram) compared to a negative control cell (left histogram). FITC-conjugated goat-anti-rabbit secondary antibodies were used for the analysis.

### Western Blotting

**Image 2.** CCNC Antibody (N-term) western blot analysis in NCI-H460 cell line lysates (35µg/lane). This demonstrates the CCNC antibody detected the CCNC protein (arrow).