



[Go to Product page](#)

Datasheet for ABIN951763

## anti-CCNI2 antibody (Middle Region)

### 3 Images

#### Overview

Quantity:	0.4 mL
Target:	CCNI2
Binding Specificity:	AA 99-129, Middle Region
Reactivity:	Human
Host:	Rabbit
Clonality:	Polyclonal
Conjugate:	This CCNI2 antibody is un-conjugated
Application:	Western Blotting (WB), Immunohistochemistry (Paraffin-embedded Sections) (IHC (p)), Enzyme Immunoassay (EIA)

#### Product Details

Immunogen:	KLH conjugated synthetic peptide between 99-129 amino acids from the Central region of human CCNI2
Isotype:	Ig Fraction
Specificity:	This antibody reacts to CCNI2.
Cross-Reactivity (Details):	Species reactivity (tested):Human.
Purification:	Affinity Purified

#### Target Details

Target:	CCNI2
---------	-------

## Target Details

---

Alternative Name:	Cyclin I2 ( <a href="#">CCNI2 Products</a> )
Background:	CCNI2 belongs to the cyclin family.Synonyms: CCNI2
Molecular Weight:	40622 Da
Gene ID:	645121
NCBI Accession:	<a href="#">NP_001034869</a>

## Application Details

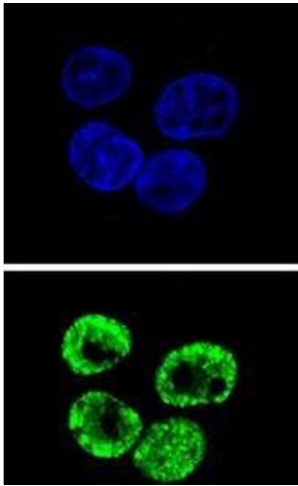
---

Application Notes:	Optimal working dilution should be determined by the investigator.
Restrictions:	For Research Use only

## Handling

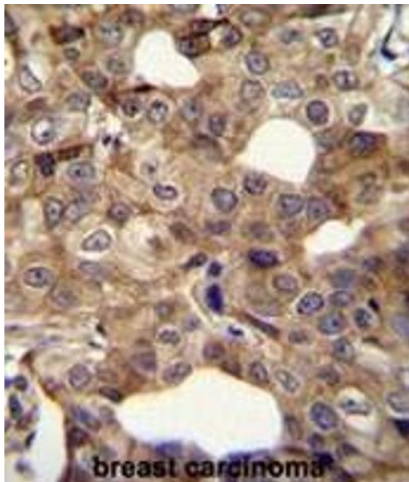
---

Format:	Liquid
Concentration:	0.25 mg/mL
Buffer:	PBS, 0.09 % (W/V) sodium azide
Preservative:	Sodium azide
Precaution of Use:	This product contains sodium azide: a POISONOUS AND HAZARDOUS SUBSTANCE which should be handled by trained staff only.
Handling Advice:	Avoid repeated freezing and thawing.
Storage:	4 °C/-20 °C
Storage Comment:	Store undiluted at 2-8 °C for one month or (in aliquots) at -20 °C for longer.



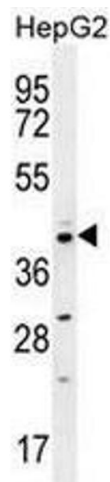
### Immunofluorescence

**Image 1.** Confocal immunofluorescent analysis of CCNI2 Antibody (Center)(Cat#AP50818PU-N) with HepG2 cell followed by Alexa Fluor 488-conjugated goat anti-rabbit IgG (green). DAPI was used to stain the cell nuclear (blue).



### Immunohistochemistry (Paraffin-embedded Sections)

**Image 2.** CCNI2 Antibody (Center) immunohistochemistry analysis in formalin fixed and paraffin embedded human breast carcinoma followed by peroxidase conjugation of the secondary antibody and DAB staining. This data demonstrates the use of CCNI2 Antibody (Center) for immunohistochemistry. Clinical relevance has not been evaluated.



### Western Blotting

**Image 3.** CCNI2 Antibody (Center) western blot analysis in HepG2 cell line lysates (35µg/lane). This demonstrates the CCNI2 antibody detected the CCNI2 protein (arrow).