

Datasheet for ABIN951770
anti-PPIC antibody (Middle Region)

3 Images

[Go to Product page](#)

Overview

Quantity:	0.4 mL
Target:	PPIC
Binding Specificity:	AA 68-97, Middle Region
Reactivity:	Human
Host:	Rabbit
Clonality:	Polyclonal
Conjugate:	This PPIC antibody is un-conjugated
Application:	Western Blotting (WB), Flow Cytometry (FACS), Immunohistochemistry (Paraffin-embedded Sections) (IHC (p)), Enzyme Immunoassay (EIA)

Product Details

Immunogen:	KLH conjugated synthetic peptide between 68~97 amino acids from the Center region of Human Cyclophilin C. Genename: PPIC
Isotype:	Ig Fraction
Specificity:	This antibody recognizes Human Cyclophilin C (Center).
Purification:	Affinity Chromatography on Protein A

Target Details

Target:	PPIC
Alternative Name:	Cyclophilin C (PPIC Products)

Target Details

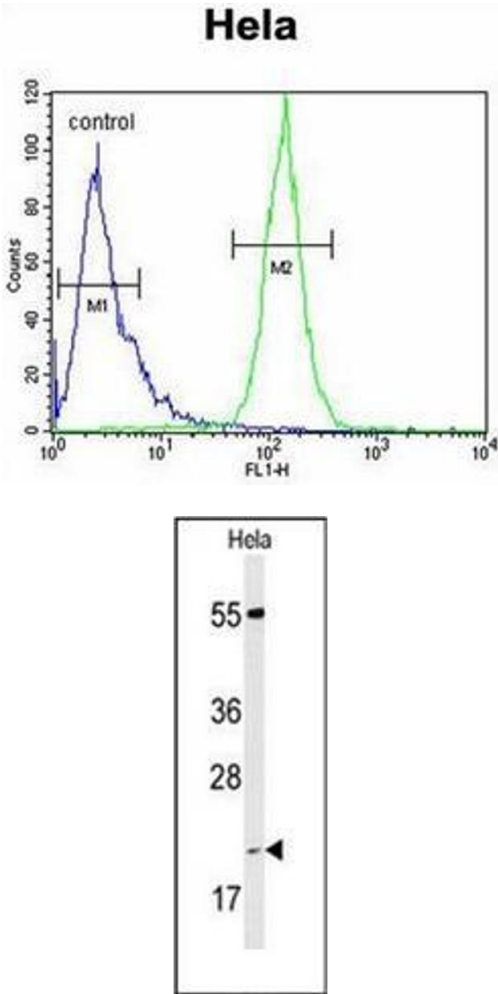
Background:	PPIC is a member of the peptidyl-prolyl cis-trans isomerase (PPIase)) family. PPIases catalyze the cis-trans isomerization of proline imidic peptide bonds in oligopeptides and accelerate the folding of proteins. Similar to other PPIases, this protein can bind immunosuppressant cyclosporin A.Synonyms: CYPC, PPIC, PPIase C, Rotamase C
Molecular Weight:	22763 Da
Gene ID:	5480
NCBI Accession:	NP_000934

Application Details

Application Notes:	Optimal working dilution should be determined by the investigator.
Restrictions:	For Research Use only

Handling

Format:	Liquid
Concentration:	0.25 mg/mL
Buffer:	PBS containing 0.09 % (W/V) Sodium Azide as preservative
Preservative:	Sodium azide
Precaution of Use:	This product contains sodium azide: a POISONOUS AND HAZARDOUS SUBSTANCE which should be handled by trained staff only.
Handling Advice:	Avoid repeated freezing and thawing.
Storage:	4 °C/-20 °C
Storage Comment:	Store undiluted at 2-8 °C for one month or (in aliquots) at -20 °C for longer.

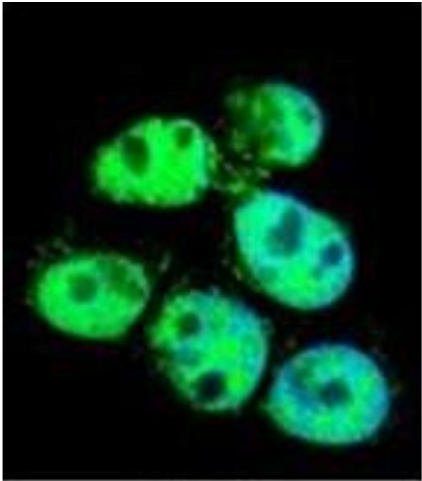


Immunohistochemistry (Paraffin-embedded Sections)

Image 1. Formalin-fixed and paraffin-embedded human brain tissue reacted with PPIC Antibody (Center) followed which was peroxidase-conjugated to the secondary antibody, followed by DAB staining.

Western Blotting

Image 2. Western blot analysis of PPIC Antibody (Center) in HeLa cell line lysates (35ug/lane). PPIC (arrow) was detected using the purified Pab.



Flow Cytometry

Image 3. Flow cytometric analysis of HeLa cells using PPIC Antibody (Center) Cat.-No AP53410PU-N (right histogram) compared to a negative control cell (left histogram). FITC-conjugated goat-anti-rabbit secondary antibodies were used for the analysis.