



Datasheet for ABIN951775  
**anti-CYP1A2 antibody (Middle Region)**



[Go to Product page](#)

3 Images

Overview

Quantity:	0.4 mL
Target:	CYP1A2
Binding Specificity:	AA 262-290, Middle Region
Reactivity:	Human, Mouse
Host:	Rabbit
Clonality:	Polyclonal
Conjugate:	This CYP1A2 antibody is un-conjugated
Application:	Western Blotting (WB), Immunofluorescence (IF), Immunohistochemistry (Paraffin-embedded Sections) (IHC (p)), Enzyme Immunoassay (EIA)

Product Details

Immunogen:	KLH conjugated synthetic peptide between 262-290 amino acids from the Central region of Human CYP1A2. Genename: CYP1A2
Isotype:	Ig Fraction
Specificity:	This antibody recognizes Human and Mouse CYP1A2 (Center). Other species not tested.
Purification:	Affinity Chromatography on Protein A

Target Details

Target:	CYP1A2
Alternative Name:	CYP1A2 ( <a href="#">CYP1A2 Products</a> )

## Target Details

---

**Background:** This gene encodes a member of the cytochrome P450 superfamily of enzymes. The cytochrome P450 proteins are monooxygenases which catalyze many reactions involved in drug metabolism and synthesis of cholesterol, steroids and other lipids. The protein encoded by this gene localizes to the endoplasmic reticulum and its expression is induced by some polycyclic aromatic hydrocarbons (PAHs), some of which are found in cigarette smoke. The enzyme's endogenous substrate is unknown, however, it is able to metabolize some PAHs to carcinogenic intermediates. Other xenobiotic substrates for this enzyme include caffeine, aflatoxin B1, and acetaminophen. The transcript from this gene contains four Alu sequences flanked by direct repeats in the 3' untranslated region. Synonyms: CYP1A2, Cytochrome P(3)450, Cytochrome P450 1A2, Cytochrome P450 4, Cytochrome P450-P3

**Molecular Weight:** 58294 Da

**Gene ID:** 1544

**NCBI Accession:** [NP\\_000752](#)

## Application Details

---

**Application Notes:** Optimal working dilution should be determined by the investigator.

**Restrictions:** For Research Use only

## Handling

---

**Format:** Liquid

**Concentration:** 0.25 mg/mL

**Buffer:** PBS, 0.09 % Sodium Azide

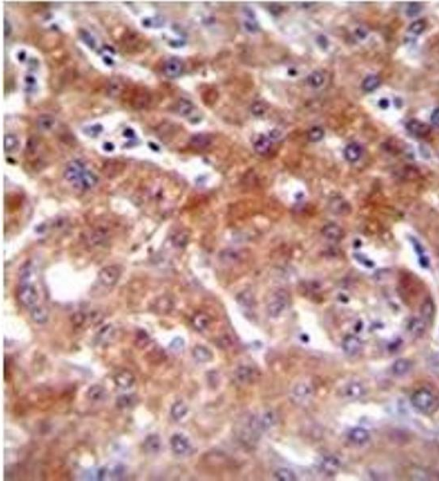
**Preservative:** Sodium azide

**Precaution of Use:** This product contains sodium azide: a POISONOUS AND HAZARDOUS SUBSTANCE which should be handled by trained staff only.

**Handling Advice:** Avoid repeated freezing and thawing.

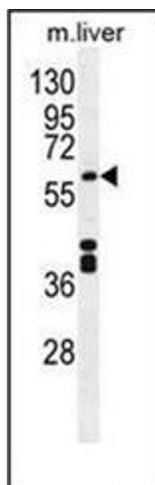
**Storage:** 4 °C/-20 °C

**Storage Comment:** Store undiluted at 2-8 °C for one month or (in aliquots) at -20 °C for longer.



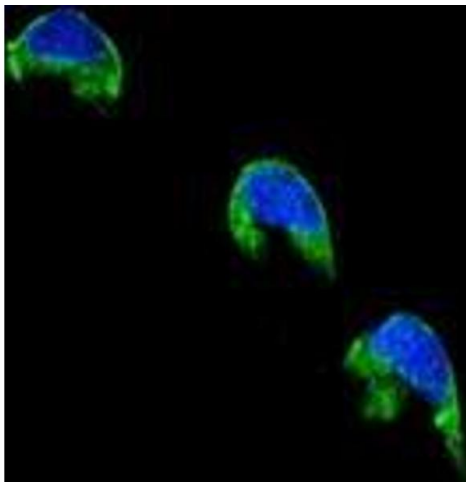
### Immunohistochemistry (Paraffin-embedded Sections)

**Image 1.** Formalin fixed, paraffin embedded Human liver tissue stained with CYP1A2 Antibody (Center) followed by peroxidase conjugation of the secondary antibody and DAB staining. This data demonstrates the use of CYP1A2 Antibody (Center) for immunohistochemistry. Clinical relevance has not been evaluated.



### Western Blotting

**Image 2.** Western blot analysis of CYP1A2 Antibody (Center) in Mouse liver tissue lysates (35ug/lane). This demonstrates the CYP1A2 antibody detected the CYP1A2 protein (arrow).



### Immunofluorescence

**Image 3.** Confocal immunofluorescent analysis of CYP1A2 Antibody (Center) Cat.-No AP51164PU-N f with 293 cell followed by Alexa Fluor<sup>®</sup>488-conjugated Goat anti-Rabbit IgG (green). DAPI was used to stain the cell nuclear (blue).