

Datasheet for ABIN951781  
**anti-CYP2A7 antibody (Middle Region)**[Go to Product page](#)

## 3 Images

## Overview

Quantity:	0.4 mL
Target:	CYP2A7
Binding Specificity:	AA 128-15, Middle Region
Reactivity:	Human
Host:	Rabbit
Clonality:	Polyclonal
Conjugate:	This CYP2A7 antibody is un-conjugated
Application:	Western Blotting (WB), Flow Cytometry (FACS), Immunohistochemistry (Paraffin-embedded Sections) (IHC (p)), Enzyme Immunoassay (EIA)

## Product Details

Immunogen:	Synthetic peptide - KLH conjugated - corresponding to the central regio (between 128-15aa) of human CYP2A7.
Isotype:	Ig Fraction
Specificity:	This antibody recognizes CYP2A7.
Cross-Reactivity (Details):	Species reactivity (tested):Human
Purification:	Purified through a Protein A column followed by peptide affinity purification

## Target Details

Target:	CYP2A7
---------	--------

## Target Details

Alternative Name: CYP2A7 ([CYP2A7 Products](#))

Background: CYP2A7 is a member of the cytochrome P450 superfamily of enzymes. The cytochrome P450 proteins are monooxygenases which catalyze many reactions involved in drug metabolism and synthesis of cholesterol, steroids and other lipids. This protein localizes to the endoplasmic reticulum, its substrate has not yet been determined. CYP2A7, which produces two transcript variants, is part of a large cluster of cytochrome P450 genes from the CYP2A, CYP2B and CYP2F subfamilies on chromosome 19q. Synonyms: CYP11A7, Cytochrome P450 2A7, Cytochrome P450-11A4

Gene ID: 1549

NCBI Accession: [NP\\_000755](#)

## Application Details

Application Notes: Optimal working dilution should be determined by the investigator.

Restrictions: For Research Use only

## Handling

Format: Liquid

Concentration: 0.25 mg/mL

Buffer: PBS with 0.09 % (W/V) Sodium azide

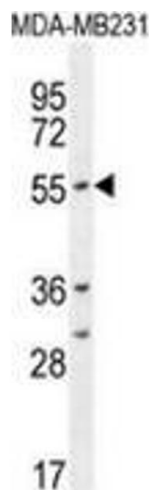
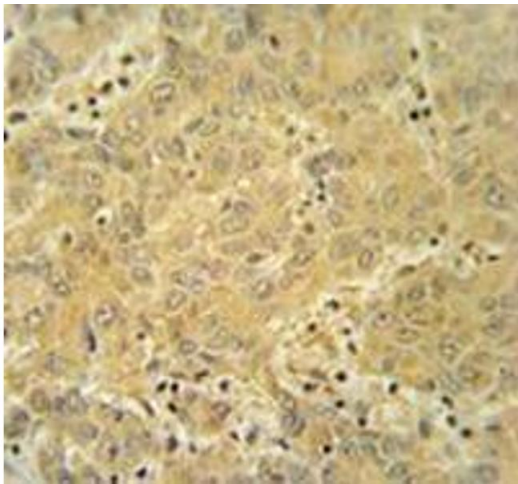
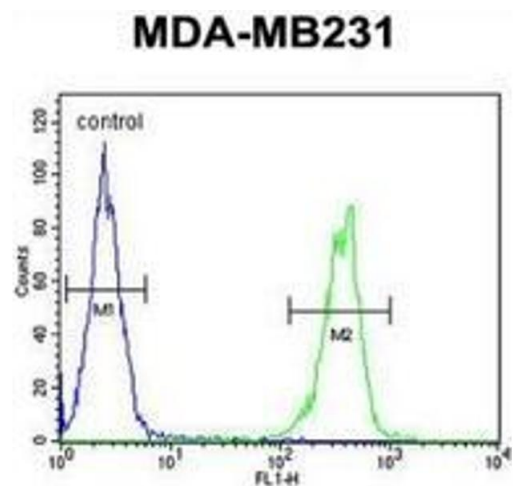
Preservative: Sodium azide

Precaution of Use: This product contains sodium azide: a POISONOUS AND HAZARDOUS SUBSTANCE which should be handled by trained staff only.

Handling Advice: Avoid repeated freezing and thawing.

Storage: 4 °C/-20 °C

Storage Comment: Store undiluted at 2-8 °C for one month or (in aliquots) at -20 °C for longer.



### Flow Cytometry

**Image 1.** Flow cytometric analysis of MDA-MB231 cells (right histogram) compared to a negative control cell (left histogram) using CYP2A7 Antibody , followed by FITC-conjugated goat-anti-rabbit secondary antibodies.

### Immunohistochemistry (Paraffin-embedded Sections)

**Image 2.** Immunohistochemistry analysis in human hepatocarcinoma tissue (Formalin-fixed, Paraffin-embedded) using CYP2A7 Antibody , followed by peroxidase conjugation of the secondary antibody and DAB staining. This data demonstrates the use of the CYP2A7 antibody for IHC; Clinical relevance has not been evaluated.

### Western Blotting

**Image 3.** Western blot analysis in MDA-MB231 cell line lysates (35ug/lane) using CYP2A7 Antibody . This demonstrates the CYP2A7 antibody detected the CYP2A7 protein (arrow).