



[Go to Product page](#)

Datasheet for ABIN951784

## anti-CYP2S1 antibody (C-Term)

### 3 Images

#### Overview

Quantity:	0.4 mL
Target:	CYP2S1
Binding Specificity:	AA 406-436, C-Term
Reactivity:	Human
Host:	Rabbit
Clonality:	Polyclonal
Conjugate:	This CYP2S1 antibody is un-conjugated
Application:	Western Blotting (WB), Immunofluorescence (IF), Immunohistochemistry (Paraffin-embedded Sections) (IHC (p)), Enzyme Immunoassay (EIA)

#### Product Details

Immunogen:	KLH conjugated synthetic peptide between 406-436 amino acids from the C-terminal region of Human CYP2S1. Genename: CYP2S1
Isotype:	Ig Fraction
Specificity:	This antibody recognizes Human CYP2S1 (C-term).
Purification:	Affinity Chromatography on Protein A

#### Target Details

Target:	CYP2S1
Alternative Name:	CYP2S1 ( <a href="#">CYP2S1 Products</a> )

## Target Details

---

**Background:** This gene encodes a member of the cytochrome P450 superfamily of enzymes. The cytochrome P450 proteins are monooxygenases which catalyze many reactions involved in drug metabolism and synthesis of cholesterol, steroids and other lipids. This protein localizes to the endoplasmic reticulum. In rodents, the homologous protein has been shown to metabolize certain carcinogens, however, the specific function of the human protein has not been determined. Synonyms: Cytochrome P450 2S1

**Molecular Weight:** 55817 Da

**Gene ID:** 29785

**NCBI Accession:** [NP\\_085125](#)

## Application Details

---

**Application Notes:** Optimal working dilution should be determined by the investigator.

**Restrictions:** For Research Use only

## Handling

---

**Format:** Liquid

**Concentration:** 0.25 mg/mL

**Buffer:** PBS, 0.09 % Sodium Azide

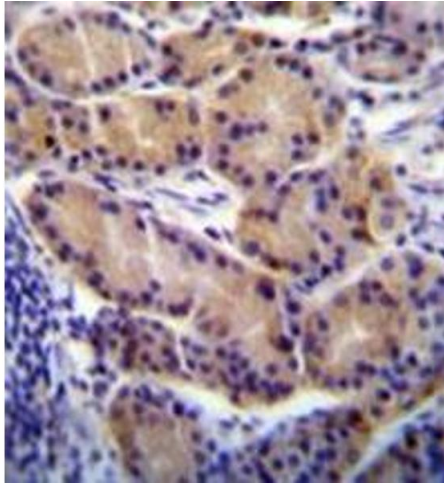
**Preservative:** Sodium azide

**Precaution of Use:** This product contains sodium azide: a POISONOUS AND HAZARDOUS SUBSTANCE which should be handled by trained staff only.

**Handling Advice:** Avoid repeated freezing and thawing.

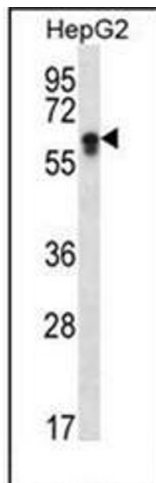
**Storage:** 4 °C/-20 °C

**Storage Comment:** Store undiluted at 2-8 °C for one month or (in aliquots) at -20 °C for longer.



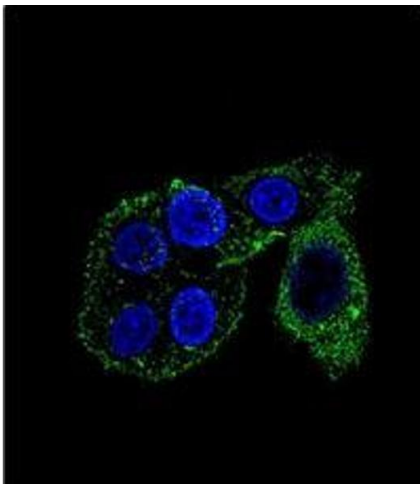
### Immunohistochemistry (Paraffin-embedded Sections)

**Image 1.** Formalin fixed, paraffin embedded human stomach tissue stained with CYP2S1 Antibody (C-term) followed by peroxidase conjugation of the secondary antibody and DAB staining. This data demonstrates the use of CYP2S1 Antibody (C-term) for immunohistochemistry. Clinical relevance has not been evaluated.



### Western Blotting

**Image 2.** Western blot analysis of CYP2S1 Antibody (C-term) in HepG2 cell line lysates (35ug/lane). This demonstrates the CYP2S1 antibody detected the CYP2S1 protein (arrow).



### Immunofluorescence

**Image 3.** Confocal immunofluorescent analysis of CYP2S1 Antibody (C-term) Cat.-No AP51171PU-N with HepG2 cell followed by Alexa Fluor®488-conjugated goat anti-rabbit IgG (green). DAPI was used to stain the cell nuclear (blue).