



[Go to Product page](#)

Datasheet for ABIN951785

anti-CYP39A1 antibody (C-Term)

3 Images

Overview

Quantity:	50 µg
Target:	CYP39A1
Binding Specificity:	C-Term
Reactivity:	Human, Mouse
Host:	Rabbit
Clonality:	Polyclonal
Conjugate:	This CYP39A1 antibody is un-conjugated
Application:	Western Blotting (WB), Immunofluorescence (IF), Immunohistochemistry (Paraffin-embedded Sections) (IHC (p)), Enzyme Immunoassay (EIA)

Product Details

Immunogen:	Synthetic peptide from Human Cytochrome P450 39A1.
Isotype:	IgG
Specificity:	This antibody detects endogenous levels of total Cytochrome P450 39A1 protein.
Cross-Reactivity (Details):	Species reactivity (expected):Mouse. Species reactivity (tested):Human.
Purification:	Immunoaffinity Chromatography

Target Details

Target:	CYP39A1
---------	---------

Target Details

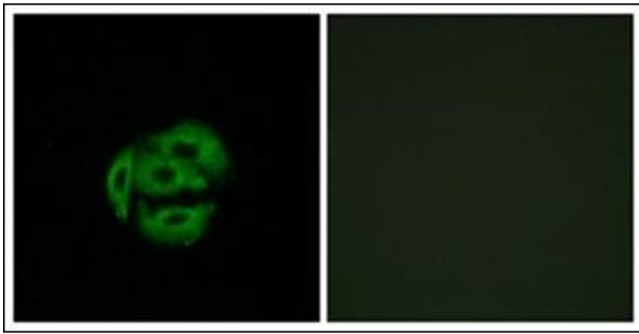
Alternative Name:	CYP39A1 (CYP39A1 Products)
Background:	The CYP39A1 gene encodes a member of the cytochrome P450 superfamily of enzymes. The cytochrome P450 proteins are monooxygenases which catalyze many reactions involved in drug metabolism and synthesis of steroids, cholesterol and other lipids. This endoplasmic reticulum protein is involved in the conversion of cholesterol to bile acids. Its substrates include the oxysterols 25-hydroxycholesterol, 27-hydroxycholesterol and 24-hydroxycholesterol. Synonyms: 24-hydroxycholesterol 7-alpha-hydroxylase, Cytochrome P450 39A1, Oxysterol 7-alpha-hydroxylase
Gene ID:	51302
NCBI Accession:	NP_057677
Pathways:	Monocarboxylic Acid Catabolic Process

Application Details

Application Notes:	Optimal working dilution should be determined by the investigator.
Restrictions:	For Research Use only

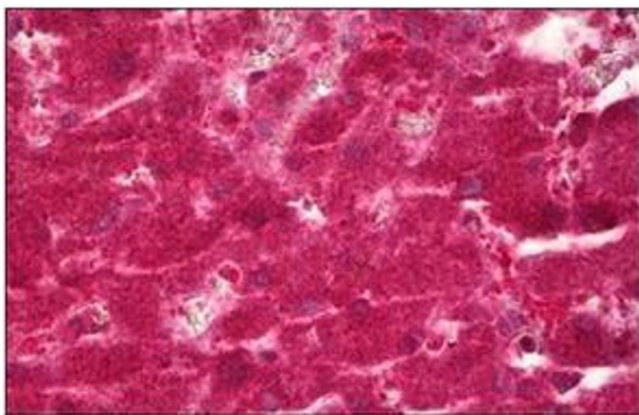
Handling

Concentration:	1.0 mg/mL
Buffer:	PBS (without Mg ²⁺ , Ca ²⁺), pH 7.4, 150 mM Sodium Chloride, 0.02 % Sodium Azide and 50 % Glycerol
Preservative:	Sodium azide
Precaution of Use:	This product contains sodium azide: a POISONOUS AND HAZARDOUS SUBSTANCE which should be handled by trained staff only.
Handling Advice:	Avoid repeated freezing and thawing.
Storage:	4 °C/-20 °C
Storage Comment:	Store the antibody undiluted at 2-8 °C for one month or (in aliquots) at -20 °C for longer.



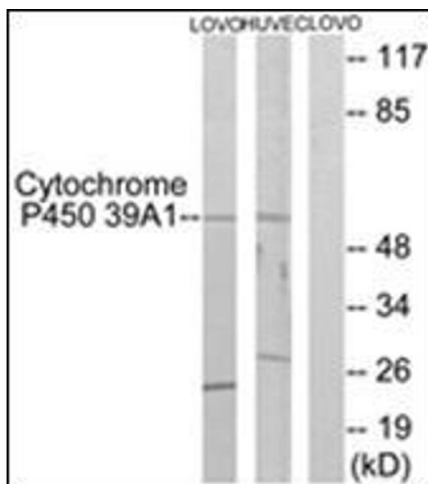
Immunofluorescence

Image 1. Immunofluorescence analysis of A549 cells, using CYP39A1 Antibody . The picture on the right is treated with the synthesized peptide.



Immunohistochemistry (Paraffin-embedded Sections)

Image 2. Formalin-Fixed, Paraffin-Embedded Human Liver stained with CYP39A1



Western Blotting

Image 3. Western blot analysis of extracts from LOVO/HuVc cells, using CYP39A1 Antibody . The lane on the right is treated with the synthesized peptide.