

Datasheet for ABIN951788

## anti-CysLTR1 antibody (Middle Region)



[Go to Product page](#)

### 1 Image

#### Overview

Quantity:	0.4 mL
Target:	CysLTR1 (CYSLTR1)
Binding Specificity:	AA 143-172, Middle Region
Reactivity:	Human
Host:	Rabbit
Clonality:	Polyclonal
Conjugate:	This CysLTR1 antibody is un-conjugated
Application:	Western Blotting (WB), Enzyme Immunoassay (EIA)

#### Product Details

Immunogen:	KLH conjugated synthetic peptide between 143-172 amino acids from the Central region of Human CYSLTR1. Genename: CYSLTR1
Isotype:	Ig Fraction
Specificity:	This antibody recognizes Human CYSLTR1 (Center).
Purification:	Affinity Chromatography on Protein A

#### Target Details

Target:	CysLTR1 (CYSLTR1)
Alternative Name:	CYSLTR1 ( <a href="#">CYSLTR1 Products</a> )
Background:	The cysteinyl leukotrienes LTC <sub>4</sub> , LTD <sub>4</sub> , and LTE <sub>4</sub> are important mediators of human bronchial

## Target Details

asthma. Pharmacologic studies have determined that cysteinyl leukotrienes activate at least 2 receptors, the protein encoded by this gene and CYSLTR2. This encoded receptor is a member of the superfamily of G protein-coupled receptors. Activation of this receptor by LTD4 results in contraction and proliferation of smooth muscle, oedema, eosinophil migration and damage to the mucus layer in the lung. Synonyms: CysLTR1, Cysteinyl leukotriene D4 receptor, Cysteinyl leukotriene receptor 1, G-protein coupled receptor HG55, HG55, HMTMF81, LTD4 receptor

Molecular Weight: 38541 Da

Gene ID: 10800

NCBI Accession: [NP\\_006630](#)

## Application Details

Application Notes: Optimal working dilution should be determined by the investigator.

Restrictions: For Research Use only

## Handling

Format: Liquid

Concentration: 0.25 mg/mL

Buffer: PBS, 0.09 % Sodium Azide

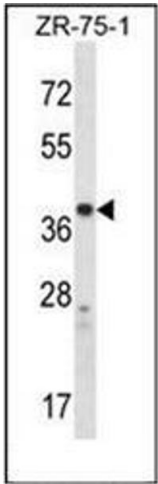
Preservative: Sodium azide

Precaution of Use: This product contains sodium azide: a POISONOUS AND HAZARDOUS SUBSTANCE which should be handled by trained staff only.

Handling Advice: Avoid repeated freezing and thawing.

Storage: 4 °C/-20 °C

Storage Comment: Store undiluted at 2-8 °C for one month or (in aliquots) at -20 °C for longer.



Western Blotting

**Image 1.** Western blot analysis of CYSLTR1 Antibody (Center) in ZR-75-1 cell line lysates (35ug/lane). This demonstrates the CYSLTR1 antibody detected the CYSLTR1 protein (arrow).