

Datasheet for ABIN951796

## anti-Cytochrome b antibody (Middle Region)



[Go to Product page](#)

### 1 Image

#### Overview

Quantity:	0.4 mL
Target:	Cytochrome b (MT-CYB)
Binding Specificity:	AA 207-237, Middle Region
Reactivity:	Human
Host:	Rabbit
Clonality:	Polyclonal
Conjugate:	This Cytochrome b antibody is un-conjugated
Application:	Western Blotting (WB), Enzyme Immunoassay (EIA)

#### Product Details

Immunogen:	KLH conjugated synthetic peptide between 207~237 amino acids from the Central region of Human CYTB. Genename: CYTB
Isotype:	Ig Fraction
Specificity:	This antibody recognizes Human CYTB (Center).
Purification:	Affinity Chromatography on Protein A

#### Target Details

Target:	Cytochrome b (MT-CYB)
Alternative Name:	Cytochrome B ( <a href="#">MT-CYB Products</a> )
Background:	Component of the ubiquinol-cytochrome c reductase complex (complex III or cytochrome b-c1

## Target Details

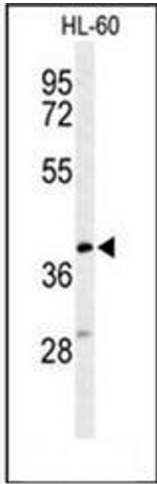
	complex), which is a respiratory chain that generates an electrochemical potential coupled to ATP synthesis (By similarity).Synonyms: COB, CYTB, Complex III subunit 3, Complex III subunit III, Cytochrome b-c1 complex subunit 3, MT-CYB, MTCYB, Ubiquinol-cytochrome-c reductase complex cytochrome b subunit
Molecular Weight:	42730 Da
Gene ID:	4519
NCBI Accession:	<a href="#">YP_003024038</a>
Pathways:	<a href="#">Proton Transport</a>

## Application Details

Application Notes:	Optimal working dilution should be determined by the investigator.
Restrictions:	For Research Use only

## Handling

Format:	Liquid
Concentration:	0.25 mg/mL
Buffer:	PBS, 0.09 % Sodium Azide
Preservative:	Sodium azide
Precaution of Use:	This product contains sodium azide: a POISONOUS AND HAZARDOUS SUBSTANCE which should be handled by trained staff only.
Handling Advice:	Avoid repeated freezing and thawing.
Storage:	4 °C/-20 °C
Storage Comment:	Store undiluted at 2-8 °C for one month or (in aliquots) at -20 °C for longer.



Western Blotting

**Image 1.** Western blot analysis of Cytochrome b Antibody (Center) in HL-60 cell line lysates (35ug/lane). CYTB (arrow) was detected using the purified Pab.