

Datasheet for ABIN951797
anti-CYBA antibody (C-Term)[Go to Product page](#)

2 Images

Overview

Quantity:	0.4 mL
Target:	CYBA
Binding Specificity:	AA 124-153, C-Term
Reactivity:	Human
Host:	Rabbit
Clonality:	Polyclonal
Conjugate:	This CYBA antibody is un-conjugated
Application:	Western Blotting (WB), Immunofluorescence (IF), Enzyme Immunoassay (EIA)

Product Details

Immunogen:	KLH conjugated synthetic peptide between 124-153 amino acids from the C-terminal region of Human Cytochrome b-245 light chain. Genename: CYBA
Isotype:	Ig Fraction
Specificity:	This antibody recognizes Human Cytochrome b-245 light chain (C-term).
Purification:	Protein A column, followed by peptide affinity purification

Target Details

Target:	CYBA
Alternative Name:	Cytochrome B-245 Light Chain (CYBA Products)
Background:	Cytochrome b is comprised of a light chain (alpha) and a heavy chain (beta). This gene encodes

Target Details

the light, alpha subunit which has been proposed as a primary component of the microbicidal oxidase system of phagocytes. Mutations in this gene are associated with autosomal recessive chronic granulomatous disease (CGD), that is characterized by the failure of activated phagocytes to generate superoxide, which is important for the microbicidal activity of these cells. Synonyms: CYBA, Cytochrome b(558) alpha chain, Cytochrome b558 subunit alpha, Neutrophil cytochrome b 22 kDa polypeptide, Superoxide-generating NADPH oxidase light chain subunit, p22 phagocyte B-cytochrome, p22-phox

Molecular Weight: 21013 Da

Gene ID: 1535

NCBI Accession: [NP_000092](#)

Pathways: [Regulation of Systemic Arterial Blood Pressure by Hormones](#), [Carbohydrate Homeostasis](#)

Application Details

Application Notes: Optimal working dilution should be determined by the investigator.

Restrictions: For Research Use only

Handling

Format: Liquid

Concentration: 0.25 mg/mL

Buffer: PBS containing 0.09 % (W/V) Sodium Azide as preservative

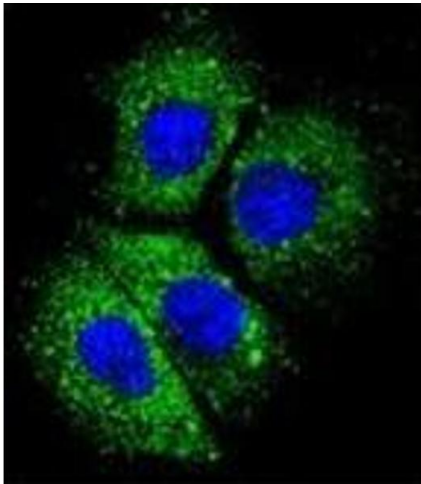
Preservative: Sodium azide

Precaution of Use: This product contains sodium azide: a POISONOUS AND HAZARDOUS SUBSTANCE which should be handled by trained staff only.

Handling Advice: Avoid repeated freezing and thawing.

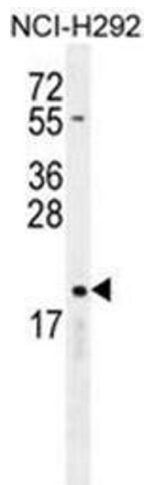
Storage: 4 °C/-20 °C

Storage Comment: Store undiluted at 2-8 °C for one month or (in aliquots) at -20 °C for longer.



Immunofluorescence

Image 1. Confocal immunofluorescent analysis of CYBA Antibody (C-term) Cat.-No AP51159PU-N with NCI-H292 cell followed by Alexa Fluor 488-conjugated goat anti-rabbit IgG (green). DAPI was used to stain the cell nuclear (blue).



Western Blotting

Image 2. Western blot analysis of CYBA Antibody (C-term) Cat.-No AP51159PU-N in NCI-H292 cell line lysates (35ug/lane). This demonstrates the CYBA antibody detected the CYBA protein (arrow).