

Datasheet for ABIN951804
anti-Cytohesin 3 antibody (C-Term)[Go to Product page](#)

2 Images

Overview

Quantity:	0.4 mL
Target:	Cytohesin 3 (CYTH3)
Binding Specificity:	AA 371-400, C-Term
Reactivity:	Human, Mouse
Host:	Rabbit
Clonality:	Polyclonal
Conjugate:	This Cytohesin 3 antibody is un-conjugated
Application:	Western Blotting (WB), Enzyme Immunoassay (EIA)

Product Details

Immunogen:	KLH conjugated synthetic peptide between 371~400 amino acids from the C-terminal region of Human CYTH3. Genename: CYTH3
Isotype:	Ig Fraction
Specificity:	This antibody recognizes Human and Mouse Cytohesin 3 (C-term).
Purification:	Affinity Chromatography on Protein A

Target Details

Target:	Cytohesin 3 (CYTH3)
Alternative Name:	Cytohesin 3 (CYTH3 Products)
Background:	This gene encodes a member of the PSCD (pleckstrin homology, Sec7 and coiled-coil domains)

Target Details

family. PSCD family members have identical structural organization that consists of an N-terminal coiled-coil motif, a central Sec7 domain, and a C-terminal pleckstrin homology (PH) domain. The coiled-coil motif is involved in homodimerization, the Sec7 domain contains guanine-nucleotide exchange protein (GEP) activity, and the PH domain interacts with phospholipids and is responsible for association of PSCDs with membranes. Members of this family appear to mediate the regulation of protein sorting and membrane trafficking. This encoded protein is involved in the control of Golgi structure and function, and it may have a physiological role in regulating ADP-ribosylation factor protein 6 (ARF) functions, in addition to acting on ARF1. Synonyms: ARF nucleotide-binding site opener 3, ARNO3, CYTH3, GRP1, General receptor of phosphoinositides 1, PH, PSCD3, SEC7 and coiled-coil domain-containing protein 3

Molecular Weight: 46349 Da

Gene ID: 9265

NCBI Accession: [NP_004218](#)

Application Details

Application Notes: Optimal working dilution should be determined by the investigator.

Restrictions: For Research Use only

Handling

Format: Liquid

Concentration: 0.25 mg/mL

Buffer: PBS, 0.09 % Sodium Azide

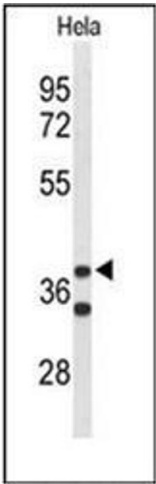
Preservative: Sodium azide

Precaution of Use: This product contains sodium azide: a POISONOUS AND HAZARDOUS SUBSTANCE which should be handled by trained staff only.

Handling Advice: Avoid repeated freezing and thawing.

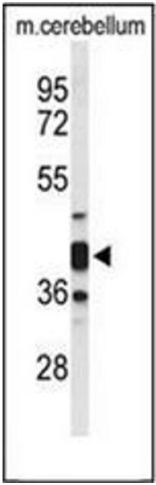
Storage: 4 °C/-20 °C

Storage Comment: Store undiluted at 2-8 °C for one month or (in aliquots) at -20 °C for longer.



Western Blotting

Image 1. Western blot analysis of Cytohesin 3 Antibody (C-term) in HeLa cell line lysates (35ug/lane). CYTH3 (arrow) was detected using the purified Pab.



Western Blotting

Image 2. Western blot analysis of Cytohesin 3 Antibody (C-term) in Mouse cerebellum tissue lysates (35ug/lane). CYTH3 (arrow) was detected using the purified Pab.