

Datasheet for ABIN951805

anti-Cytohesin 4 antibody (C-Term)[Go to Product page](#)**1** Image

Overview

Quantity:	0.4 mL
Target:	Cytohesin 4 (CYTH4)
Binding Specificity:	AA 290-319, C-Term
Reactivity:	Human
Host:	Rabbit
Clonality:	Polyclonal
Conjugate:	This Cytohesin 4 antibody is un-conjugated
Application:	Western Blotting (WB), Enzyme Immunoassay (EIA)

Product Details

Immunogen:	KLH conjugated synthetic peptide between 290-319 amino acids from the C-terminal region of Human CYTH4 Genename: CYTH4
Isotype:	Ig Fraction
Specificity:	This antibody recognizes Human Cytohesin-4 (C-term).
Purification:	Affinity Chromatography on Protein A

Target Details

Target:	Cytohesin 4 (CYTH4)
Alternative Name:	Cytohesin 4 (CYTH4 Products)
Background:	The protein encoded by this gene is a member of the PSCD family. Members of this family have

Target Details

identical structural organization that consists of an N-terminal coiled-coil motif, a central Sec7 domain, and a C-terminal pleckstrin homology (PH) domain. The coiled-coil motif is involved in homodimerization, the Sec7 domain contains guanine-nucleotide exchange protein (GEP) activity, and the PH domain interacts with phospholipids and is responsible for association of PSCDs with membranes. Members of this family appear to mediate the regulation of protein sorting and membrane trafficking. The encoded protein exhibits GEP activity in vitro with both ARF1 and ARF5 but is inactive with ARF6. The structures of this gene and CYTH1 are very similar. [provided by RefSeq].Synonyms: CYT4, CYTH4, PSCD4

Molecular Weight: 45672 Da

Gene ID: 27128

NCBI Accession: [NP_037517](#)

Application Details

Application Notes: Optimal working dilution should be determined by the investigator.

Restrictions: For Research Use only

Handling

Format: Liquid

Concentration: 0.25 mg/mL

Buffer: PBS, 0.09 % Sodium Azide

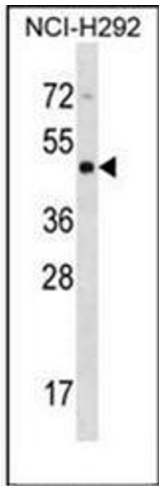
Preservative: Sodium azide

Precaution of Use: This product contains sodium azide: a POISONOUS AND HAZARDOUS SUBSTANCE which should be handled by trained staff only.

Handling Advice: Avoid repeated freezing and thawing.

Storage: 4 °C/-20 °C

Storage Comment: Store undiluted at 2-8 °C for one month or (in aliquots) at -20 °C for longer.



Western Blotting

Image 1. Western blot analysis of Cytohesin 4 Antibody (C-term) in NCI-H292 cell line lysates (35ug/lane). This demonstrates the CYTH4 antibody detected the CYTH4 protein (arrow).