

Datasheet for ABIN951809

anti-Cytokeratin 1 antibody (Middle Region)[Go to Product page](#)**3** Images

Overview

Quantity:	0.4 mL
Target:	Cytokeratin 1 (KRT1)
Binding Specificity:	AA 422-451, Middle Region
Reactivity:	Human
Host:	Rabbit
Clonality:	Polyclonal
Conjugate:	This Cytokeratin 1 antibody is un-conjugated
Application:	Western Blotting (WB), Flow Cytometry (FACS), Immunohistochemistry (Paraffin-embedded Sections) (IHC (p))

Product Details

Immunogen:	KLH conjugated synthetic peptide between 422~451 amino acids from the Central region of human KRT1
Isotype:	Ig Fraction
Specificity:	This antibody reacts to KRT1.
Cross-Reactivity (Details):	Species reactivity (tested):Human.
Purification:	Saturated Ammonium Sulfate (SAS) precipitation

Target Details

Target:	Cytokeratin 1 (KRT1)
---------	----------------------

Target Details

Alternative Name:	Cytokeratin 1 (KRT1 Products)
Background:	KRT1 is a member of the keratin gene family. The type II cytokeratins consist of basic or neutral proteins which are arranged in pairs of heterotypic keratin chains coexpressed during differentiation of simple and stratified epithelial tissues. This type II cytokeratin is specifically expressed in the spinous and granular layers of the epidermis with family member KRT10 and mutations in these genes have been associated with bullous congenital ichthyosiform erythroderma. Synonyms: 67 kDA cytokeratin, Cytokeratin 1, Hair alpha protein, K1, KRT1, KRTA, Keratin type II cytoskeletal 1, Keratin-1

Molecular Weight:	66039 Da
-------------------	----------

Gene ID:	3848
----------	------

NCBI Accession:	NP_006112
-----------------	---------------------------

Application Details

Application Notes:	Optimal working dilution should be determined by the investigator.
--------------------	--

Restrictions:	For Research Use only
---------------	-----------------------

Handling

Format:	Liquid
---------	--------

Concentration:	0.25 mg/mL
----------------	------------

Buffer:	PBS, 0.09 % (W/V) sodium azide
---------	--------------------------------

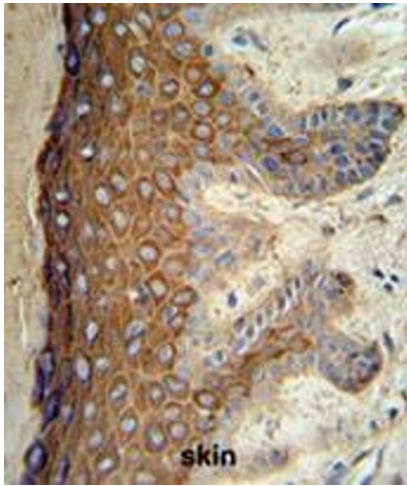
Preservative:	Sodium azide
---------------	--------------

Precaution of Use:	This product contains sodium azide: a POISONOUS AND HAZARDOUS SUBSTANCE which should be handled by trained staff only.
--------------------	--

Handling Advice:	Avoid repeated freezing and thawing.
------------------	--------------------------------------

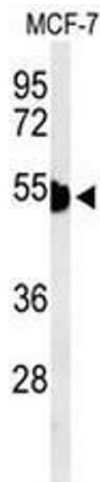
Storage:	4 °C/-20 °C
----------	-------------

Storage Comment:	Store the antibody undiluted at 2-8 °C for one month or (in aliquots) at -20 °C for longer.
------------------	---



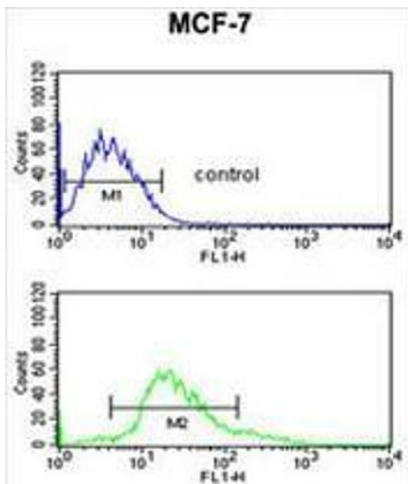
Immunohistochemistry (Paraffin-embedded Sections)

Image 1. KRT1 Antibody (Center) IHC analysis in formalin fixed and paraffin embedded skin tissue followed by peroxidase conjugation of the secondary antibody and DAB staining. This data demonstrates the use of the KRT1 Antibody (Center) for immunohistochemistry. Clinical relevance has not been evaluated.



Western Blotting

Image 2. Western blot analysis of KRT1 Antibody (Center) in MCF-7 cell line lysates (35µg/lane). KRT1 (arrow) was detected using the purified Pab.



Flow Cytometry

Image 3. KRT1 Antibody (Center) flow cytometric analysis of MCF-7 cells (bottom histogram) compared to a negative control cell (top histogram). FITC-conjugated goat-anti-rabbit secondary antibodies were used for the analysis.