

Datasheet for ABIN951813  
**anti-Keratin 25 antibody (C-Term)**[Go to Product page](#)

## 1 Image

## Overview

Quantity:	0.4 mL
Target:	Keratin 25 (KRT25)
Binding Specificity:	AA 387-426, C-Term
Reactivity:	Human
Host:	Rabbit
Clonality:	Polyclonal
Conjugate:	This Keratin 25 antibody is un-conjugated
Application:	Western Blotting (WB), Enzyme Immunoassay (EIA)

## Product Details

Immunogen:	KLH conjugated synthetic peptide between 387-426 amino acids from the C-terminal region of human KRT25
Isotype:	Ig Fraction
Specificity:	This antibody reacts to KRT25.
Cross-Reactivity (Details):	Species reactivity (tested):Human.
Purification:	Affinity chromatography on Protein A

## Target Details

Target:	Keratin 25 (KRT25)
Alternative Name:	Cytokeratin 25 ( <a href="#">KRT25 Products</a> )

## Target Details

**Background:** This gene encodes a member of the type I (acidic) keratin family, which belongs to the superfamily of intermediate filament (IF) proteins. Keratins are heteropolymeric structural proteins which form the intermediate filament. These filaments, along with actin microfilaments and microtubules, compose the cytoskeleton of epithelial cells. The type I keratin genes are clustered in a region of chromosome 17q12-q21. Synonyms: CK25, Cytokeratin-25, K25, K25irs1, KRT25A, Keratin type I cytoskeletal 25, Keratin-25A, Type I inner root sheath-specific keratin-K25irs1

**Molecular Weight:** 49318 Da

**Gene ID:** 147183

**NCBI Accession:** [NP\\_853512](#)

## Application Details

**Application Notes:** Optimal working dilution should be determined by the investigator.

**Restrictions:** For Research Use only

## Handling

**Format:** Liquid

**Concentration:** 0.25 mg/mL

**Buffer:** PBS, 0.09 % (W/V) sodium azide

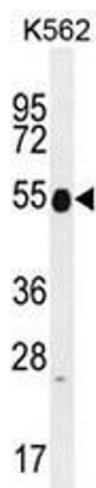
**Preservative:** Sodium azide

**Precaution of Use:** This product contains sodium azide: a POISONOUS AND HAZARDOUS SUBSTANCE which should be handled by trained staff only.

**Handling Advice:** Avoid repeated freezing and thawing.

**Storage:** 4 °C/-20 °C

**Storage Comment:** Store the antibody undiluted at 2-8 °C for one month or (in aliquots) at -20 °C for longer.



Western Blotting

**Image 1.** KRT25 Antibody (C-term) western blot analysis in K562 cell line lysates (35µg/lane). This demonstrates the KRT25 antibody detected the KRT25 protein (arrow).