

Datasheet for ABIN951815

anti-Cytokeratin 28 antibody (C-Term)[Go to Product page](#)**1** Image

Overview

Quantity:	0.4 mL
Target:	Cytokeratin 28 (KRT28)
Binding Specificity:	AA 431-460, C-Term
Reactivity:	Human
Host:	Rabbit
Clonality:	Polyclonal
Conjugate:	This Cytokeratin 28 antibody is un-conjugated
Application:	Western Blotting (WB), Enzyme Immunoassay (EIA)

Product Details

Immunogen:	KLH conjugated synthetic peptide between 431-460 amino acids from the C-terminal region of human KRT28
Isotype:	Ig Fraction
Specificity:	This antibody reacts to KRT28.
Cross-Reactivity (Details):	Species reactivity (tested):Human.
Purification:	Affinity chromatography on Protein A

Target Details

Target:	Cytokeratin 28 (KRT28)
Alternative Name:	Cytokeratin 28 (KRT28 Products)

Target Details

Background: This gene encodes a member of the type I (acidic) keratin family, which belongs to the superfamily of intermediate filament (IF) proteins. Keratins are heteropolymeric structural proteins which form the intermediate filament. These filaments, along with actin microfilaments and microtubules, compose the cytoskeleton of epithelial cells. The type I keratin genes are clustered in a region of chromosome 17q12-q21. Synonyms: CK28, Cytokeratin-28, K25irs4, K28, KRT25D, KRT28, Keratin type I cytoskeletal 28, Keratin-25D, Keratin-28, Type I inner root sheath-specific keratin-K25irs4

Molecular Weight: 50567 Da

Gene ID: 162605

NCBI Accession: [NP_853513](#)

Application Details

Application Notes: Optimal working dilution should be determined by the investigator.

Restrictions: For Research Use only

Handling

Format: Liquid

Concentration: 0.25 mg/mL

Buffer: PBS, 0.09 % (W/V) sodium azide

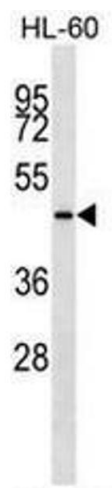
Preservative: Sodium azide

Precaution of Use: This product contains sodium azide: a POISONOUS AND HAZARDOUS SUBSTANCE which should be handled by trained staff only.

Handling Advice: Avoid repeated freezing and thawing.

Storage: 4 °C/-20 °C

Storage Comment: Store the antibody undiluted at 2-8 °C for one month or (in aliquots) at -20 °C for longer.



Western Blotting

Image 1. KRT28 Antibody (C-term) western blot analysis in HL-60 cell line lysates (35µg/lane). This demonstrates the KRT28 antibody detected the KRT28 protein (arrow).