

Datasheet for ABIN951826  
**anti-Keratin 75 antibody (N-Term)**[Go to Product page](#)

## 1 Image

## Overview

Quantity:	0.4 mL
Target:	Keratin 75 (KRT75)
Binding Specificity:	AA 65-92, N-Term
Reactivity:	Human
Host:	Rabbit
Clonality:	Polyclonal
Conjugate:	This Keratin 75 antibody is un-conjugated
Application:	Western Blotting (WB), Enzyme Immunoassay (EIA)

## Product Details

Immunogen:	KLH conjugated synthetic peptide between 65-92 amino acids from the N-terminal region of human KRT75
Isotype:	Ig Fraction
Specificity:	This antibody reacts to KRT75.
Cross-Reactivity (Details):	Species reactivity (tested):Human.
Purification:	Affinity chromatography on Protein A

## Target Details

Target:	Keratin 75 (KRT75)
Alternative Name:	Cytokeratin 75 ( <a href="#">KRT75 Products</a> )

## Target Details

**Background:** This gene is a member of the type II keratin family clustered on the long arm of chromosome 12. Type I and type II keratins heteropolymerize to form intermediate-sized filaments in the cytoplasm of epithelial cells. This gene is expressed in the companion layer, upper germinative matrix region of the hair follicle, and medulla of the hair shaft. The encoded protein plays an essential role in hair and nail formation. Variations in this gene have been associated with the hair disorders pseudofolliculitis barbae (PFB) and loose anagen hair syndrome (LAHS).Synonyms: CK75, Cytokeratin-75, K6HF, K75, KB18, KRT75, Keratin, Keratin-6 hair follicle, Keratin-75, Type II keratin-K6hf, type II cytoskeletal 75

**Molecular Weight:** 59560 Da

**Gene ID:** 9119

**NCBI Accession:** [NP\\_004684](#)

## Application Details

**Application Notes:** Optimal working dilution should be determined by the investigator.

**Restrictions:** For Research Use only

## Handling

**Format:** Liquid

**Concentration:** 0.25 mg/mL

**Buffer:** PBS, 0.09 % (W/V) sodium azide

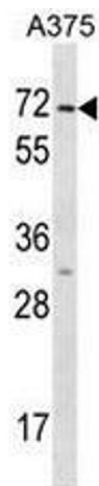
**Preservative:** Sodium azide

**Precaution of Use:** This product contains sodium azide: a POISONOUS AND HAZARDOUS SUBSTANCE which should be handled by trained staff only.

**Handling Advice:** Avoid repeated freezing and thawing.

**Storage:** 4 °C/-20 °C

**Storage Comment:** Store the antibody undiluted at 2-8 °C for one month or (in aliquots) at -20 °C for longer.



Western Blotting

**Image 1.** KRT75 Antibody (N-term) western blot analysis in A375 cell line lysates (35µg/lane). This demonstrates the KRT75 antibody detected the KRT75 protein (arrow).