

Datasheet for ABIN951832  
**anti-SPECC1L antibody (N-Term)**[Go to Product page](#)

## 2 Images

## Overview

Quantity:	0.4 mL
Target:	SPECC1L
Binding Specificity:	AA 115-144, N-Term
Reactivity:	Mouse, Human
Host:	Rabbit
Clonality:	Polyclonal
Conjugate:	This SPECC1L antibody is un-conjugated
Application:	Western Blotting (WB), Immunohistochemistry (Paraffin-embedded Sections) (IHC (p)), Enzyme Immunoassay (EIA)

## Product Details

Immunogen:	KLH conjugated synthetic peptide between 115-144 amino acids from the N-terminal region of Human CYTSA. Genename: CYTSA
Isotype:	Ig Fraction
Specificity:	This antibody recognizes Human and Mouse CYTSA (N-term).
Purification:	Protein A column, followed by peptide affinity purification

## Target Details

Target:	SPECC1L
Alternative Name:	CYTSA ( <a href="#">SPECC1L Products</a> )

## Target Details

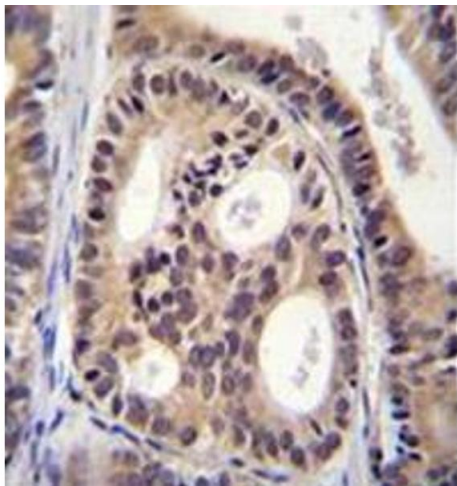
Background:	CYTSA is involved in cytokinesis and spindle organization.Synonyms: Cytospin-A, KIAA0376, SPECC1L
Molecular Weight:	124602 Da
Gene ID:	23384
NCBI Accession:	<a href="#">NP_001138940</a>

## Application Details

Application Notes:	Optimal working dilution should be determined by the investigator.
Restrictions:	For Research Use only

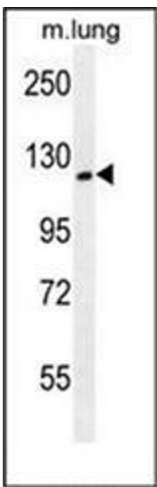
## Handling

Format:	Liquid
Concentration:	0.25 mg/mL
Buffer:	PBS containing 0.09 % (W/V) Sodium Azide as preservative
Preservative:	Sodium azide
Precaution of Use:	This product contains sodium azide: a POISONOUS AND HAZARDOUS SUBSTANCE which should be handled by trained staff only.
Handling Advice:	Avoid repeated freezing and thawing.
Storage:	4 °C/-20 °C
Storage Comment:	Store undiluted at 2-8 °C for one month or (in aliquots) at -20 °C for longer.



**Immunohistochemistry (Paraffin-embedded Sections)**

**Image 1.** Formalin fixed, paraffin embedded human prostate carcinoma stained with CYTSA Antibody (N-term) followed which was peroxidase conjugated to the secondary antibody and followed by DAB staining. This data demonstrates the use of CYTSA Antibody (N-term) for immunohistochemistry. Clinical relevance has not been evaluated.



**Western Blotting**

**Image 2.** Western blot analysis of CYTSA Antibody (N-term) in Mouse lung tissue lysates (35ug/lane). This demonstrates the CYTSA antibody detected the CYTSA protein (arrow).