

Datasheet for ABIN951834
anti-DAGLB antibody (Middle Region)

3 Images

[Go to Product page](#)

Overview

Quantity:	0.4 mL
Target:	DAGLB
Binding Specificity:	AA 497-527, Middle Region
Reactivity:	Human, Mouse
Host:	Rabbit
Clonality:	Polyclonal
Conjugate:	This DAGLB antibody is un-conjugated
Application:	Western Blotting (WB), Flow Cytometry (FACS), Enzyme Immunoassay (EIA)

Product Details

Immunogen:	KLH conjugated synthetic peptide between 497~527 amino acids from the Center region of Human DAGLB. Genename: DAGLB
Isotype:	Ig Fraction
Specificity:	This antibody recognizes Human and Mouse DAGLB (Center).
Purification:	Affinity Chromatography on Protein A

Target Details

Target:	DAGLB
Alternative Name:	DAGLB (DAGLB Products)
Background:	Catalyzes the hydrolysis of diacylglycerol (DAG) to 2-arachidonoyl-glycerol (2-AG), the most

Target Details

abundant endocannabinoid in tissues. Required for axonal growth during development and for retrograde synaptic signaling at mature synapses. Synonyms: DAGLBETA, DGL-beta, DGLb, FLJ33624, FLJ33909, FLJ45532, KCCR13L, Sn1-specific diacylglycerol lipase beta

Molecular Weight: 73732 Da (Isoform 3: 28899 Da)

Gene ID: 221955

NCBI Accession: [NP_001136408](#)

Application Details

Application Notes: Optimal working dilution should be determined by the investigator.

Restrictions: For Research Use only

Handling

Format: Liquid

Concentration: 0.25 mg/mL

Buffer: PBS, 0.09 % Sodium Azide

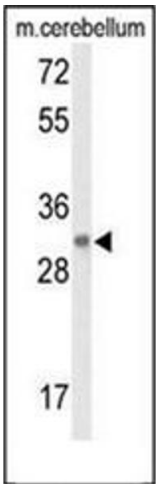
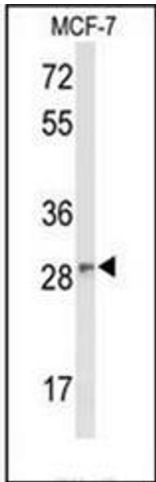
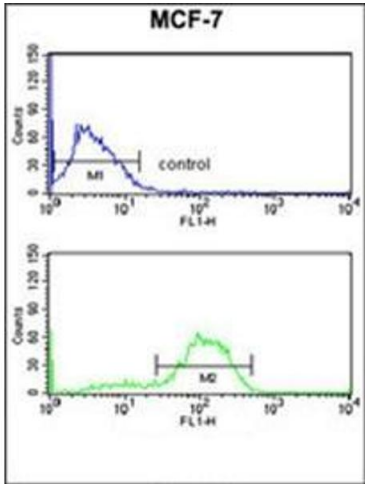
Preservative: Sodium azide

Precaution of Use: This product contains sodium azide: a POISONOUS AND HAZARDOUS SUBSTANCE which should be handled by trained staff only.

Handling Advice: Avoid repeated freezing and thawing.

Storage: 4 °C/-20 °C

Storage Comment: Store undiluted at 2-8 °C for one month or (in aliquots) at -20 °C for longer.



Flow Cytometry

Image 1. Flow cytometry analysis of MCF-7 cells using DAGLB Antibody (Center) Cat.-No AP51182PU-N (bottom histogram) compared to a negative control cell (top histogram). FITC-conjugated goat-anti-rabbit secondary antibodies were used for the analysis.

Western Blotting

Image 2. Western blot analysis of DAGLB Antibody (Center) in MCF-7 cell line lysates (35ug/lane). DAGLB (arrow) was detected using the purified Pab.

Western Blotting

Image 3. Western blot analysis of DAGLB Antibody (Center) in Mouse cerebellum tissue lysates (35ug/lane). DAGLB (arrow) was detected using the purified Pab.