



[Go to Product page](#)

Datasheet for ABIN951850
anti-DCP1B antibody (Middle Region)

2 Images

Overview

| | |
|----------------------|--|
| Quantity: | 0.4 mL |
| Target: | DCP1B |
| Binding Specificity: | AA 268-298, Middle Region |
| Reactivity: | Human |
| Host: | Rabbit |
| Clonality: | Polyclonal |
| Conjugate: | This DCP1B antibody is un-conjugated |
| Application: | Western Blotting (WB), Flow Cytometry (FACS), Enzyme Immunoassay (EIA) |

Product Details

| | |
|---------------|--|
| Immunogen: | KLH conjugated synthetic peptide between 268~298 amino acids from the Central region of Human DCP1B. Genename: DCP1B |
| Isotype: | Ig Fraction |
| Specificity: | This antibody recognizes Human DCP1B (Center). |
| Purification: | Protein A column, followed by peptide affinity purification |

Target Details

| | |
|-------------------|--|
| Target: | DCP1B |
| Alternative Name: | DCP1B (DCP1B Products) |
| Background: | DCP1B is a core component of the mRNA decapping complex, a key factor in the regulation of |

Target Details

mRNA decay.Synonyms: mRNA-decapping enzyme 1B

Molecular Weight: 67851 Da

Gene ID: 196513

NCBI Accession: [NP_689853](#)

Application Details

Application Notes: Optimal working dilution should be determined by the investigator.

Restrictions: For Research Use only

Handling

Format: Liquid

Concentration: 0.25 mg/mL

Buffer: PBS, 0.09 % (W/V) Sodium Azide

Preservative: Sodium azide

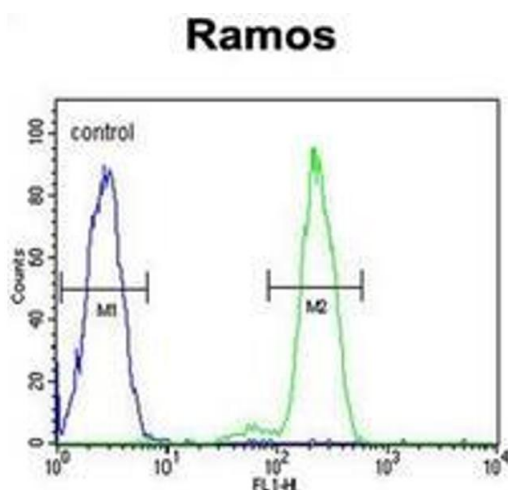
Precaution of Use: This product contains sodium azide: a POISONOUS AND HAZARDOUS SUBSTANCE which should be handled by trained staff only.

Handling Advice: Avoid repeated freezing and thawing.

Storage: 4 °C/-20 °C

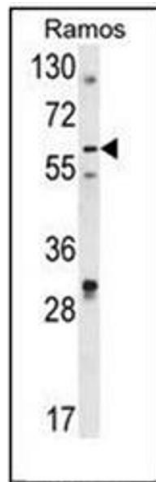
Storage Comment: Store undiluted at 2-8 °C for one month or (in aliquots) at -20 °C for longer.

Images



Flow Cytometry

Image 1. Flow cytometric analysis of Ramos cells using DCP1B Antibody (Center) Cat.-No AP51201PU-N (right histogram) compared to a negative control cell (left histogram). FITC-conjugated goat-anti-rabbit secondary antibodies were used for the analysis.



Western Blotting

Image 2. Western blot analysis of DCP1B Antibody (Center) in Ramos cell line lysates (35ug/lane). DCP1B (arrow) was detected using the purified Pab.