

Datasheet for ABIN951851
anti-DCP2 antibody (Middle Region)

3 Images

[Go to Product page](#)

Overview

Quantity:	0.4 mL
Target:	DCP2
Binding Specificity:	AA 151-181, Middle Region
Reactivity:	Human
Host:	Rabbit
Clonality:	Polyclonal
Conjugate:	This DCP2 antibody is un-conjugated
Application:	Western Blotting (WB), Flow Cytometry (FACS), Immunohistochemistry (Paraffin-embedded Sections) (IHC (p)), Enzyme Immunoassay (EIA)

Product Details

Immunogen:	KLH conjugated synthetic peptide between 151~181 amino acids from the Center region of Human DCP2 Genename: DCP2
Isotype:	Ig Fraction
Specificity:	This antibody recognizes Human DCP2 (Center).
Purification:	Affinity Chromatography on Protein A

Target Details

Target:	DCP2
Alternative Name:	DCP2 (DCP2 Products)

Target Details

Background:	DCP2 is a key component of an mRNA-decapping complex required for removal of the 5-prime cap from mRNA prior to its degradation from the 5-prime end (Fenger-Gron et al., 2005).Synonyms: NUDT20, Nucleoside diphosphate-linked moiety X motif 20, Nudix motif 20, hDpc, mRNA-decapping enzyme 2
Molecular Weight:	48457 Da
Gene ID:	167227
NCBI Accession:	NP_001229306

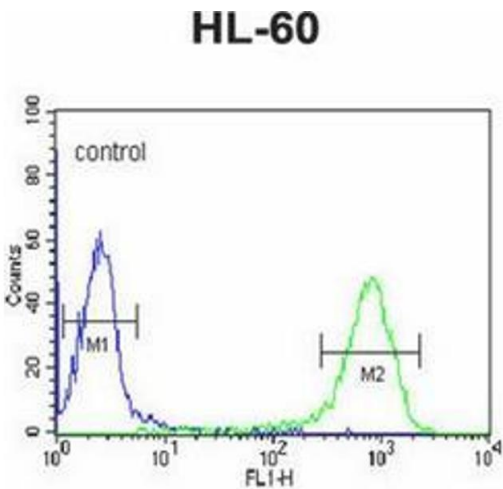
Application Details

Application Notes:	Optimal working dilution should be determined by the investigator.
Restrictions:	For Research Use only

Handling

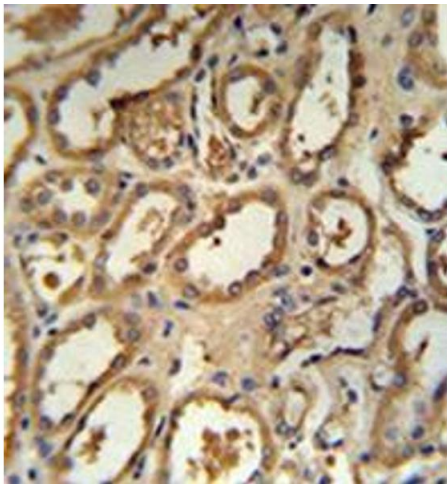
Format:	Liquid
Concentration:	0.25 mg/mL
Buffer:	PBS
Handling Advice:	Avoid repeated freezing and thawing.
Storage:	4 °C/-20 °C
Storage Comment:	Store undiluted at 2-8 °C for one month or (in aliquots) at -20 °C for longer.

Images



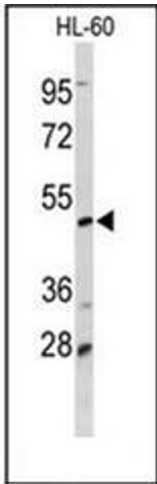
Flow Cytometry

Image 1. Flow cytometric analysis of HL-60 cells using DCP2 Antibody (Center) Cat.-No AP51202PU-N (right histogram) compared to a negative control cell (left histogram).FITC-conjugated goat-anti-rabbit secondary antibodies were used for the analysis.



Immunohistochemistry (Paraffin-embedded Sections)

Image 2. Formalin fixed and paraffin embedded human kidney tissue stained with DCP2 Antibody (Center) followed by peroxidase conjugation of the secondary antibody and DAB staining.



Western Blotting

Image 3. Western blot analysis of DCP2 Antibody (Center) in HL-60 cell line lysates (35ug/lane). DCP2 (arrow) was detected using the purified Pab.